

橋本佳巳

谷田 研 7

田舎の風景

Table with multiple rows and columns, mostly obscured by heavy horizontal black bars. Visible text includes "Tosoh" and "SuperAW2500".

Exclusion Limit Particle size Column size

Tosoh SuperAW2500

Low

4 μ m

6.0mmID \times 150mm

1.E+07

1.E+06

SuperAW4000



□ SuperAW5000
△ SuperAW4000

1.E+07

1.E+06

20000



1.E+05

MF ISO MF TP

100

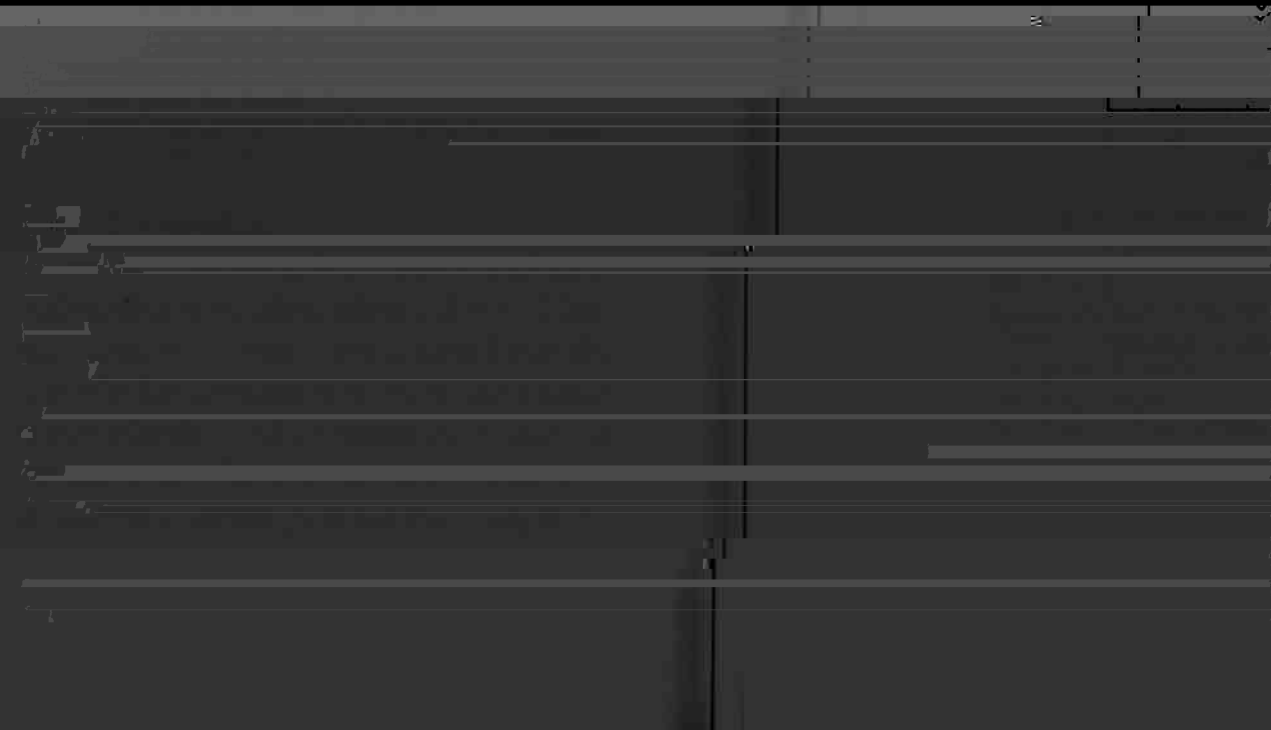
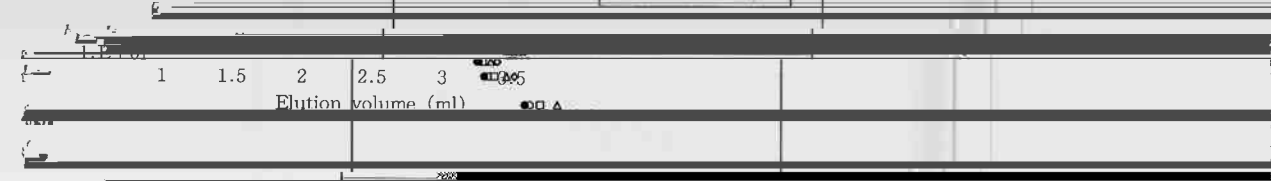
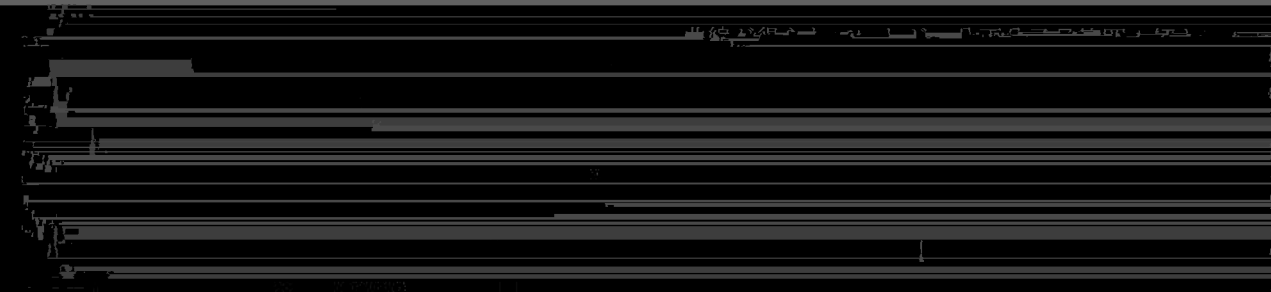
epul

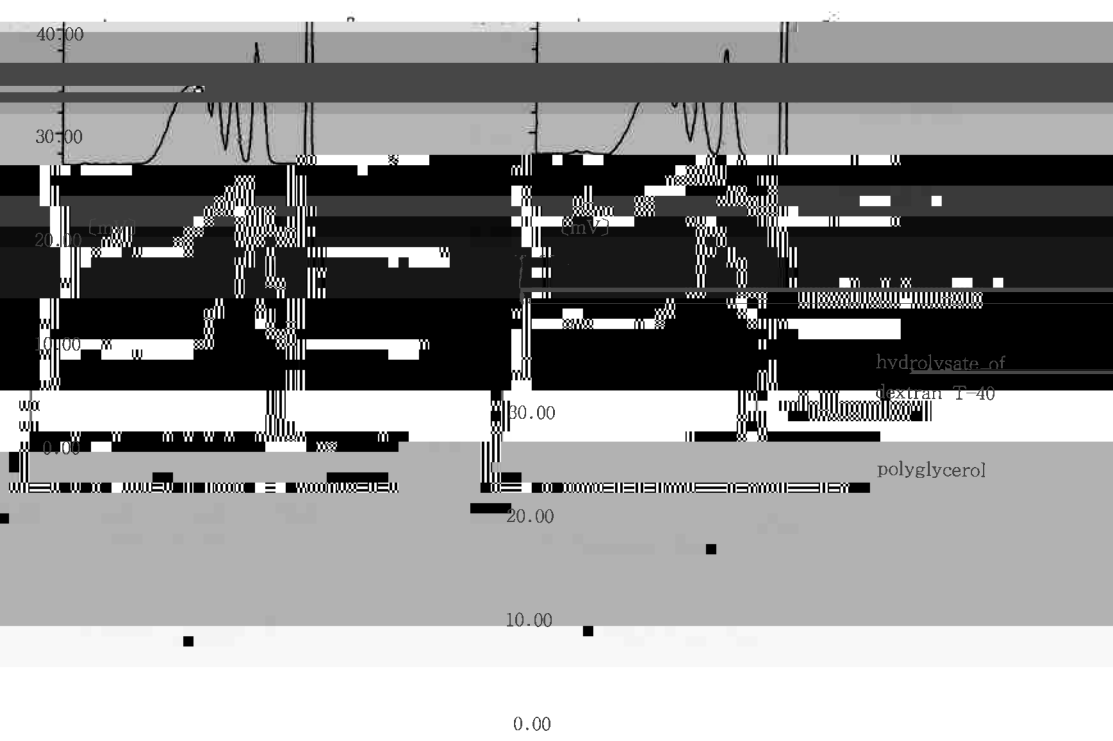
5000

△ SuperAW2500
■ SuperAW3000
× SuperAW5000

Column size:6.0mmID×150mm

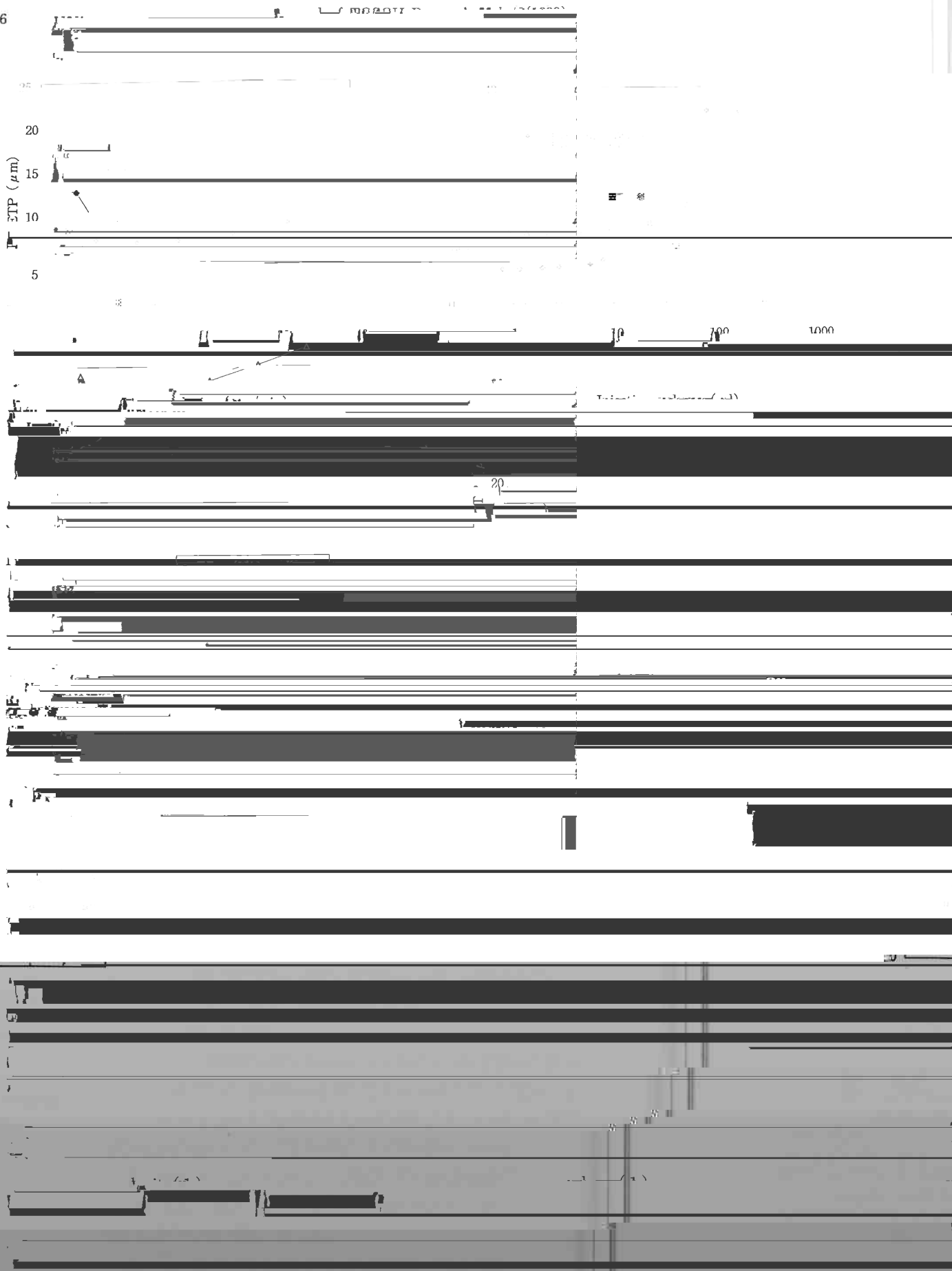
72





hydrolytate of
dextran T-40
polyglycerol

TSK gel SuperAW4000



(Condition)

500

1 10 100 1000

Injection volume (μ l)
TSKgel SuperAW3000/P-20

$\times 10$

analysis (g)

Logarithm of M_w measured on TSK

6

2

0

測定結果の相関を、以下のグラフから確認してください。

Column: TSKgel SuperAW3000 (6.0mmID×150mm)

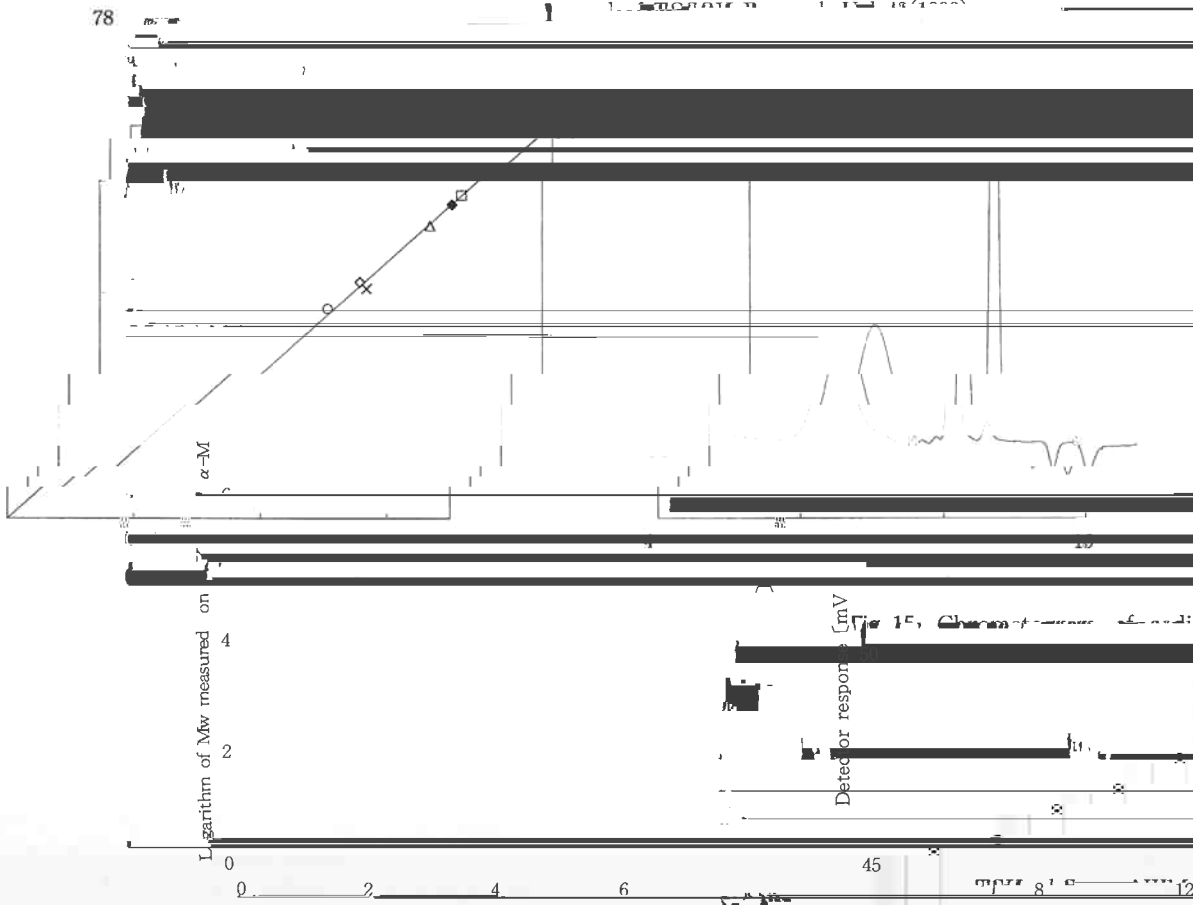


Fig. 15. Characterization of medium chains.

<Conditions>

Fig. 14 - Correlation between TSK gel

1.5% (w/v) 19/10/66

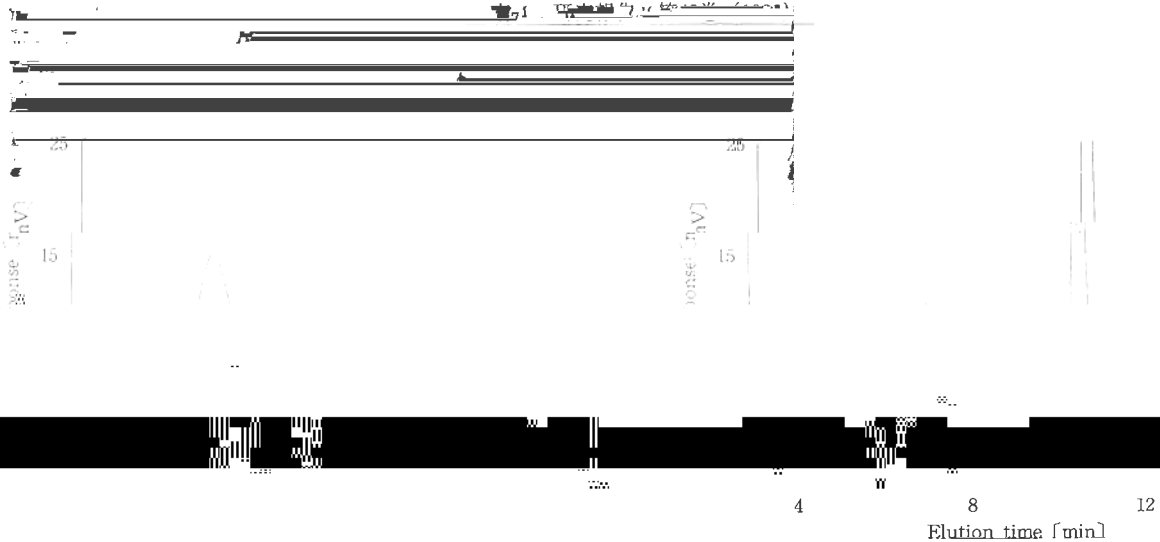


Fig.16 Chromatogram of ethyl benzenethiol

4 8 12
Elution time [min]

Fig.17 Chromatogram of polyacrylonitrile

TSK gel SuperAWM-L

<Conditions>

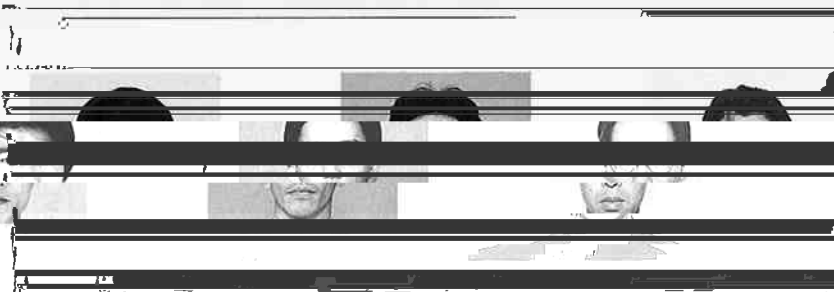
<Conditions>

Column: TSK gel SuperAWM-L

Eluent: 10mM LiBr in DMF

Flow rate: 0.6ml/min

Temperature: 40°C



11 博士 学位 論文 提出 書 提出 書 提出 書 提出 書 提出 書

[The following section contains multiple lines of text that are almost entirely obscured by heavy horizontal black redaction bars. Only a few faint characters and symbols are visible through the gaps.]