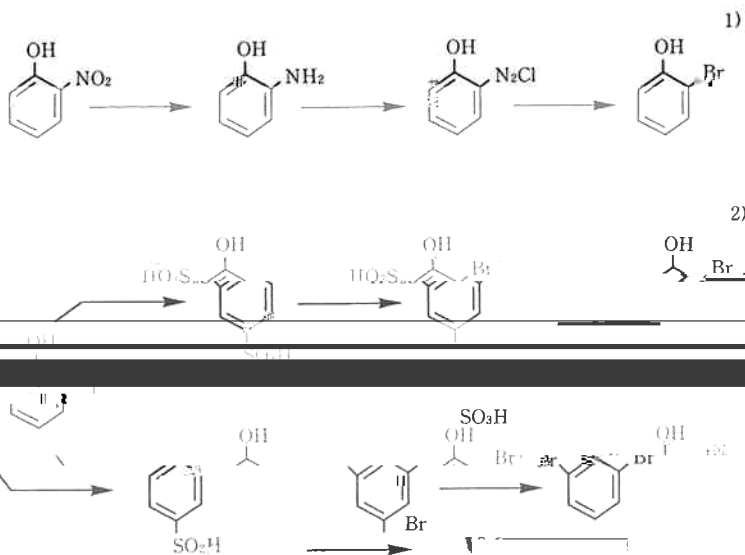


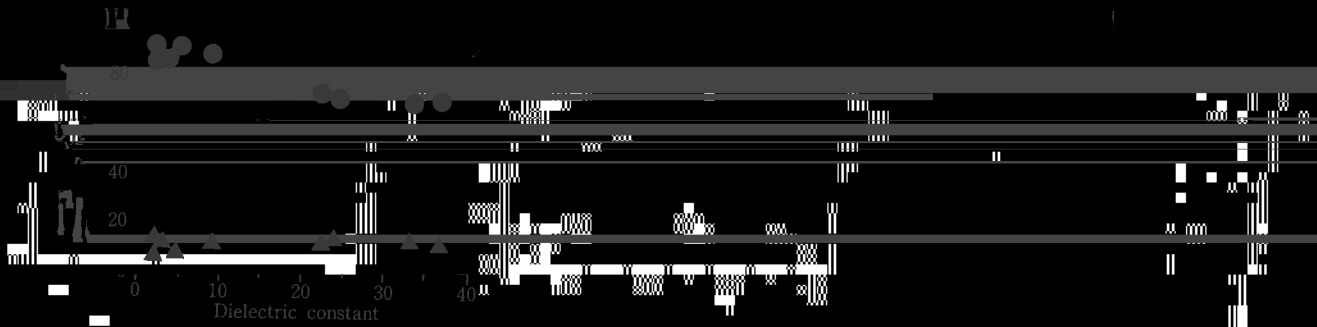
江 口 久 雄  
徳 木 勝 羊  
朱 山 秀 雄



Scheme 1

2. 実 験

ポロクロマトグラフ/薄層分析) 反応液組成の定量



reactivity %  
 reactivity (%)

Table 1. Reactivity of ANOV...

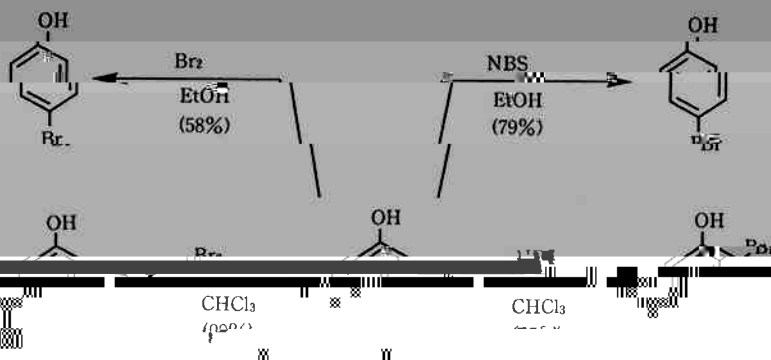
Dielectric constant

Dielectric constant	Reactivity (%)	Reactivity (%)
0	~10	~10
10	~15	~15
20	~20	~20
30	~35	~35
40	~25	~25

P<sub>0</sub>  
 Br<sub>2</sub>

B      Br





Scheme 2

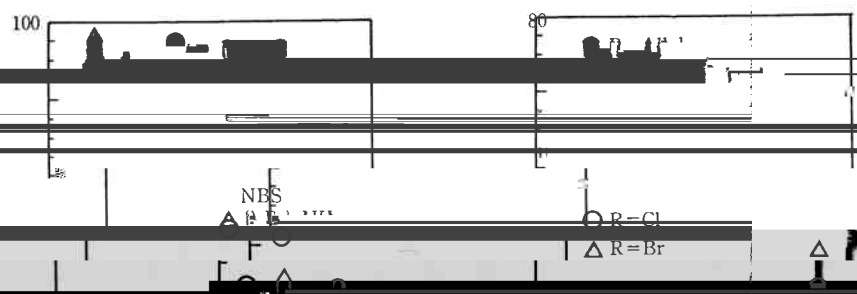
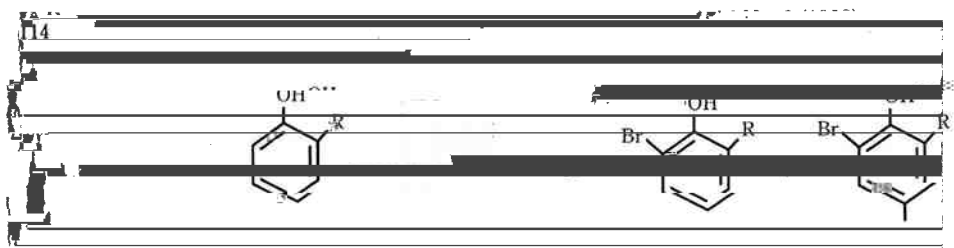
Competitive

reaction

Low High

Br

OH



(1)

(2)

Fig. 2

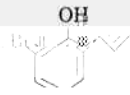
行なると考えられている<sup>9)</sup> これに対して、Caloらは、

20

20

... 400 ... 400 ...

... 400 ... 400 ...



NBS

CH<sub>2</sub>Cl<sub>2</sub>

0°C, 1h

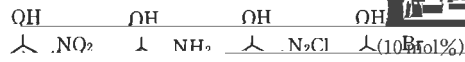
(10 mol%)

CH<sub>2</sub>Cl<sub>2</sub>

0°C, 1h

(80%)

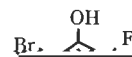
NBS



W

W

W



Scheme 6

辞

Y. H. Q. J. Jones and C. D. Jones, *Journal of Chem*

口译员在会议中起着重要的作用

Y. H. Q. J. Jones and C. D. Jones, *Journal of Chem*

