

Study of the Primary Structure of Recombinant

Nobuyuki HONMA

[The page contains a large area of text that has been almost entirely obscured by heavy horizontal black redaction bars. Only a few faint lines of text are visible through the gaps.]

[A thick black horizontal bar at the bottom of the page, likely representing a redacted footer or a scanning artifact.]



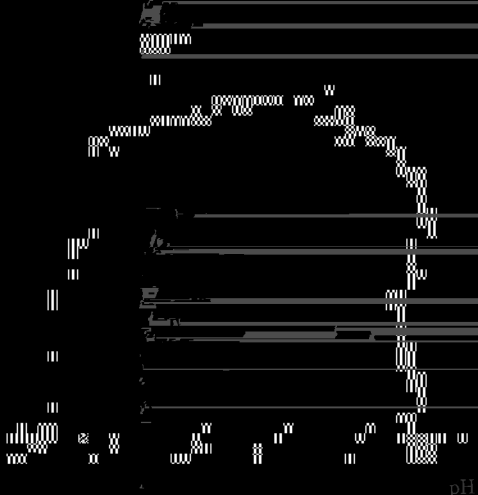
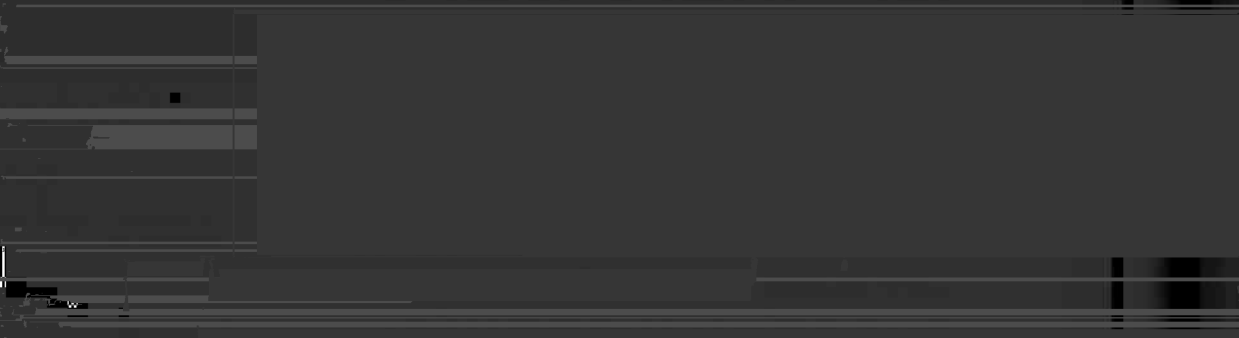


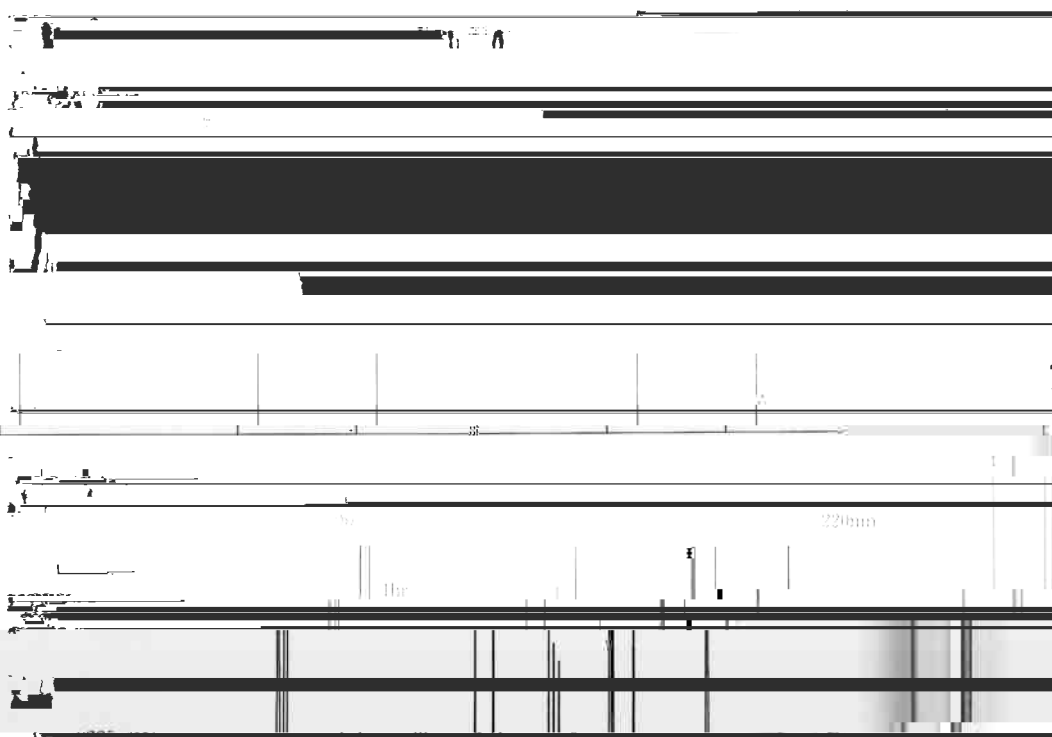
Fig. 3. pH stability of T.M. 164



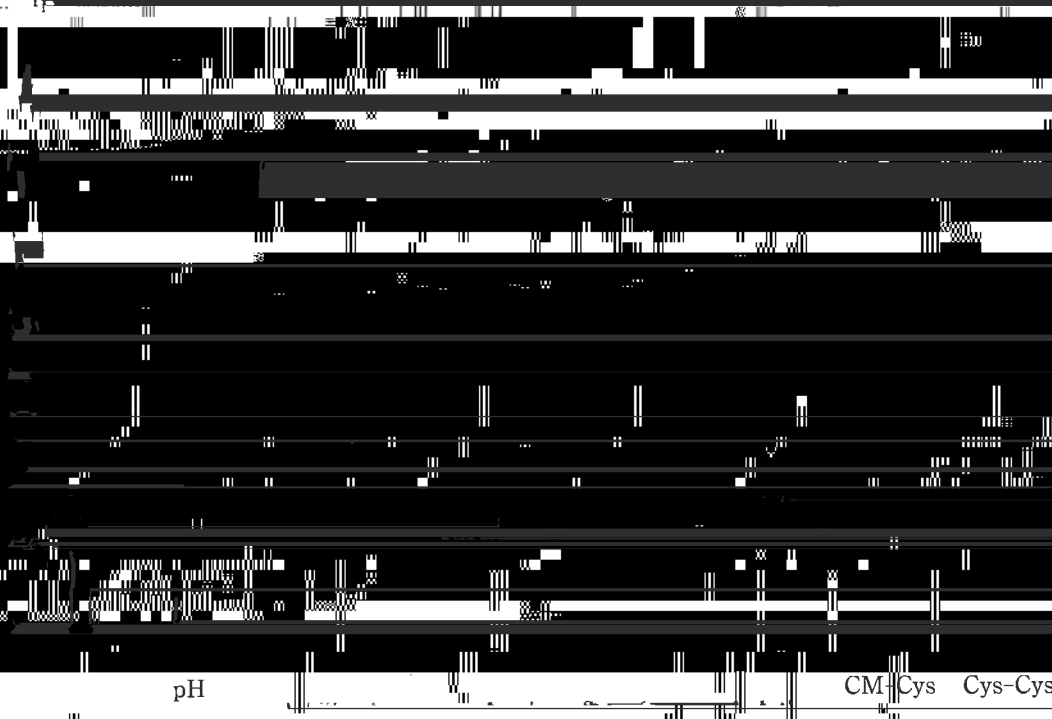
Time (h)

(181)

六検出点より抽出した成分の分析結果 (181)

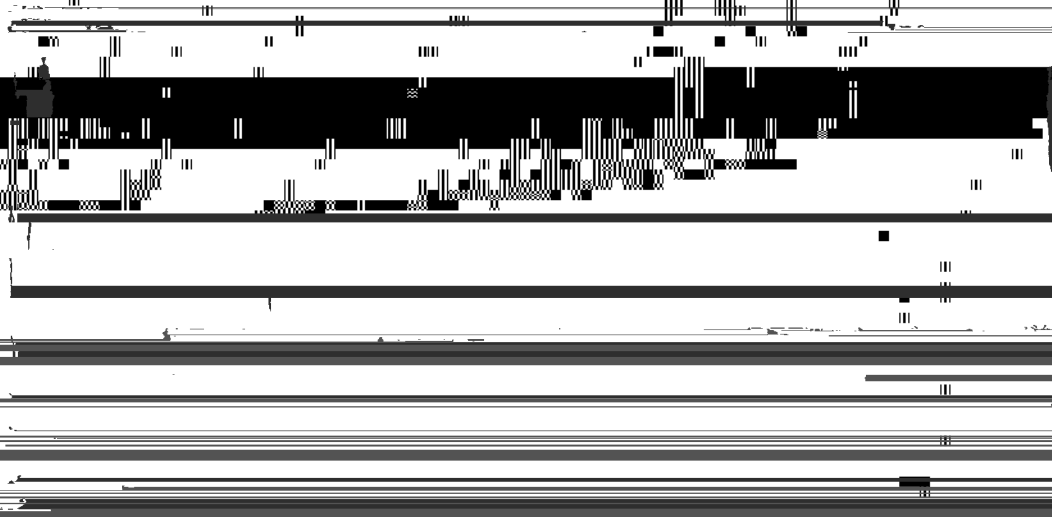


(a)



pH

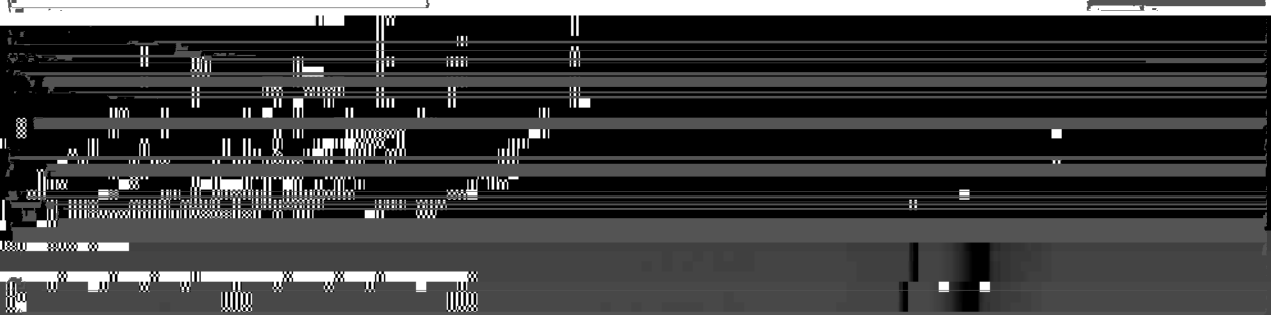
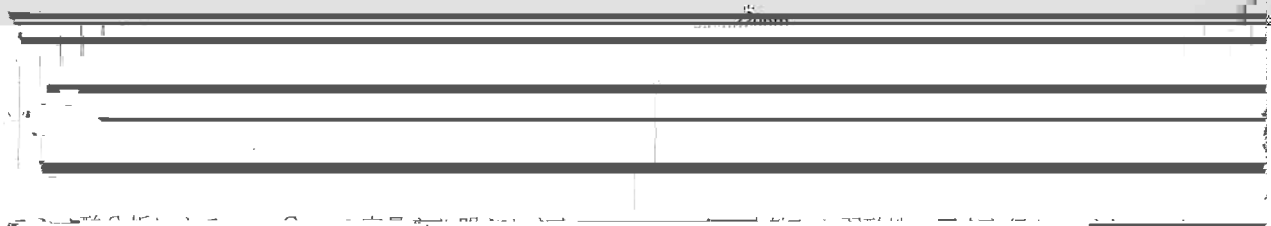
CM-Cys Cys-Cys



pH

CM-Cys Cys-Cys

[The main body of the page contains several paragraphs of text that are almost entirely illegible due to severe horizontal line artifacts.]



DCA  
DYSA  
DYPKKE

N. D.

Table 2. Amino acid sequences of ...

DPQWKT  
DKSKTCYEGNHYPGKAST

Asp-N	Residue No.	Observations	theoretical
-------	-------------	--------------	-------------

208-213

D10

N. D.  
DALQLGLGKHNFCRNP

5 53- 64 DPQFGTSCEITFGFKENST

6 1- 11

D 1

7 244 240

D17

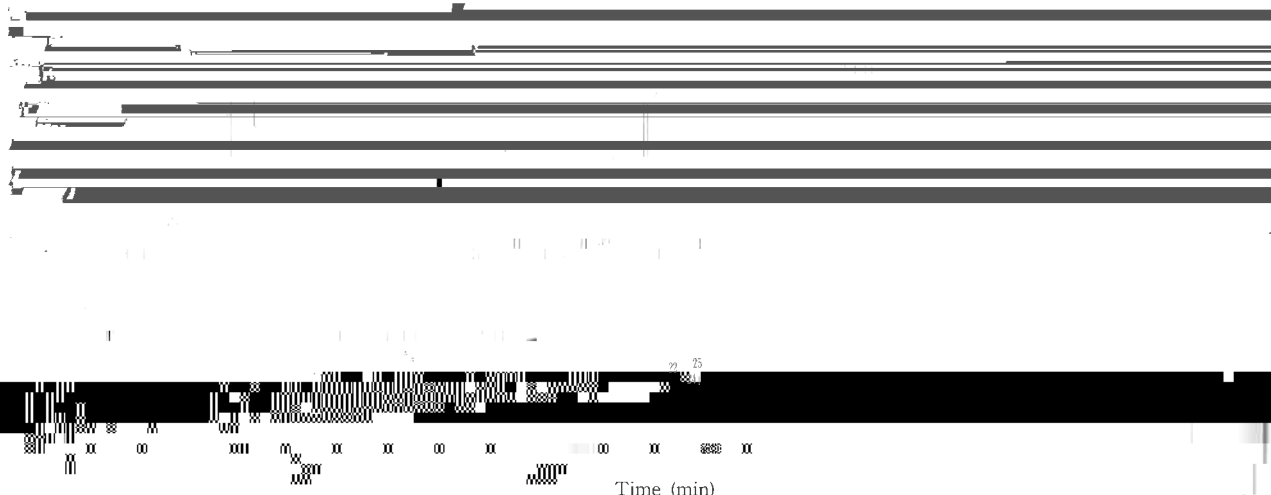


Fig. 7 Peptide map of rcmTM-164 by Lvs-C.

Ann. N.Y. Acad. Sci. 279: 1-10 (1986). © 1986 by John Wiley & Sons, Inc.



Table 3 Amino acid sequence of Tvs-C fragments

peptide No.	peptide	Accession No.
Kdf 261-264		JR5A
146-151		U01008
314-318		K19
36-46		K3-K4
37-46		K4
49-61		K6
49-55		K5-K6
1-23		K1
10 1-8		K1
11 1-10	N. D.	K1
12 405-411	N. D.	K24
13 85-95	FEVENLILHK	
14 339-348	HNYCRNPDRRPPWCVQVC	K21
15 301-319		K10
16	EGRCAQPSTRIQ <sup>2</sup> ICL-	



Theoretical SNELHOVPSNCDCLNGGTCVSNKYFSNIHWCNCPKKFGGQHCEIDKSKTCYEGNHFYRGKASTDTMGRPCLPWNSATVLO



Trypsin

Chymotri

