

平白啓直名苜田マ-オ、太挽体 Super

[Redacted text block]

	松	田	孝	夫
	吉	貫	俊	国
	小	宮	克	夫
	加	藤	芳	男

Q-トヨパール650の評価

Basic Evaluation of TOKYO Q-TOPAL 650 PEN

[Redacted text block]

Ion-exchange



図 2 結晶化の Simons の Law に基づく pH の変化

0 10 20 30
Exposure Time (day)

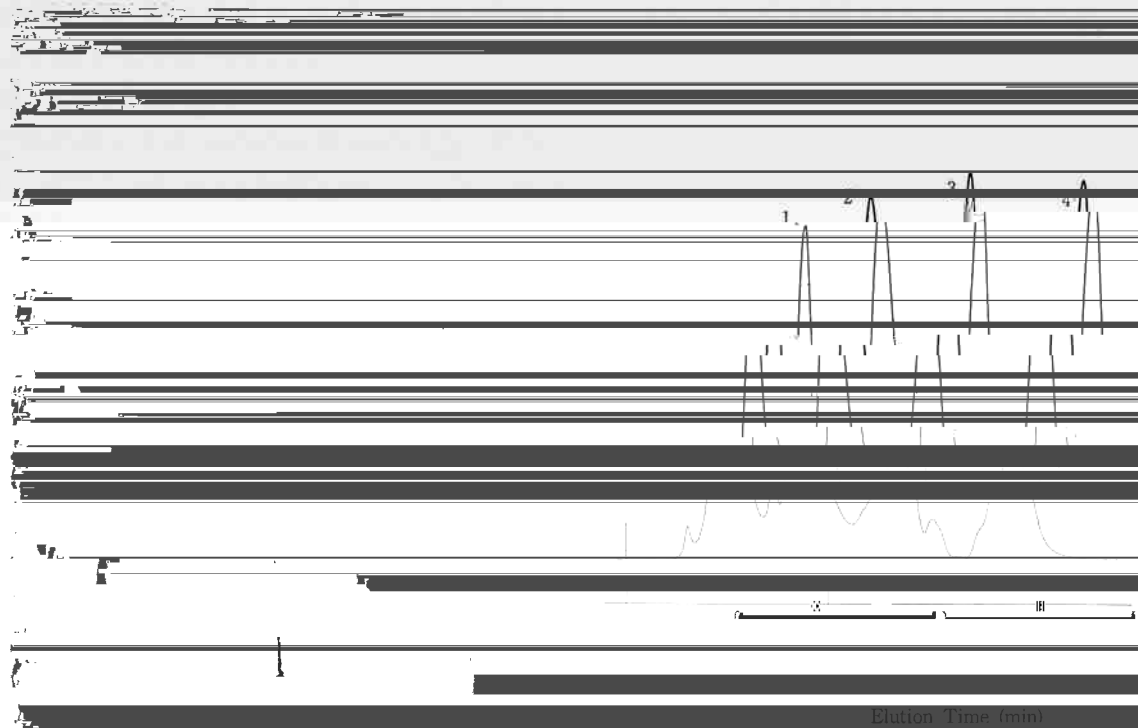
650M in alkaline and acidic aqueous solu-

tion

650C

0 10 20 30
Exposure Time (day)

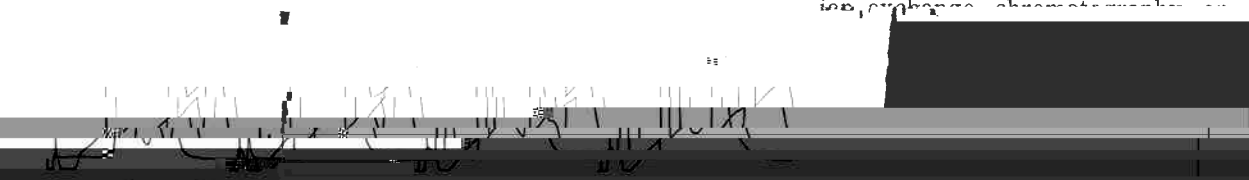
pH



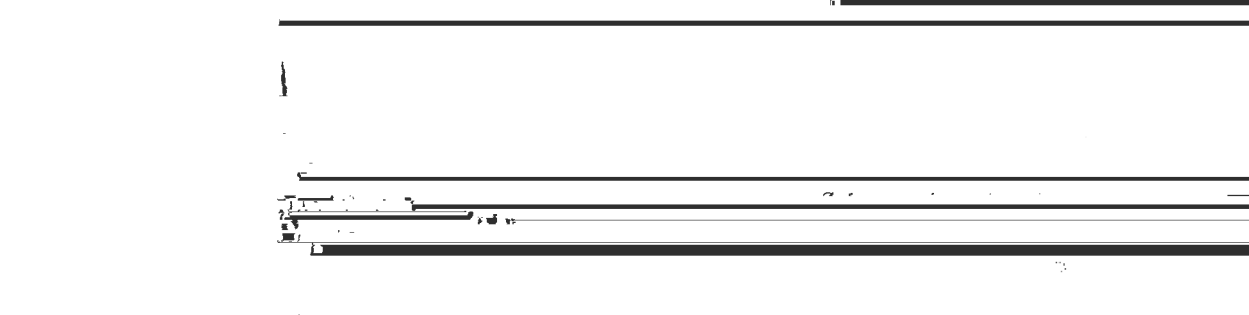
Elution Time (min)



isopropylbenzene chromatogram



Super Q-Torlon-650M



0 30 60
Elution Time (min)

90 0 30 60
Elution Time (min)

Fig. 10. Separation of hexamer from polymer.

