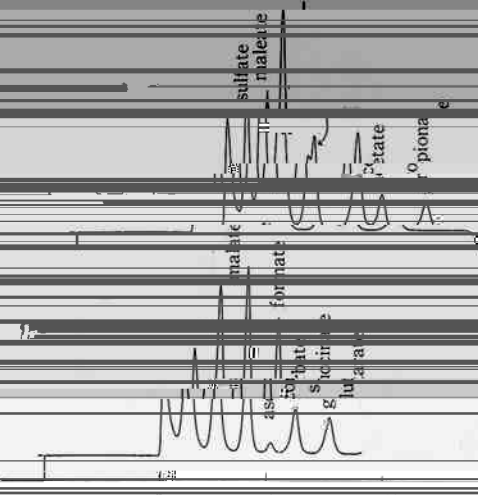


また、溶質である試料イオン (X^{2+}) のカラムからの
流出曲線 (TZ) は、流出曲線 (TZ) の試料イオンの



3. 実 験

4



1960-00-011

Fig. 2 The separation of malate

Table 1 Relation Between Distribution Coeff

| species | V | K_D | charge |
|---------|------|-------|--------|
| sulfate | 5.07 | 0.059 | 2.000 |
| | 5.70 | 0.059 | 2.000 |



Fig. 4. The simultaneous separation of anions and

cations

column: TSKgel SP-5PW

(7.5 mm × 7.5 cm × 0.9)

retention time (hr)

Fig. 5. The sodium sulfate chromatogram for the

calibration.

column: TSKgel CM-5PW

(7.5 mm × 7.5 cm)

0.1 mg/ml 2 × 10⁻⁵ M

10 × 10⁻⁵ M

Table 2. Slope of Calibration Curves and Elution Conditions SO_2

*

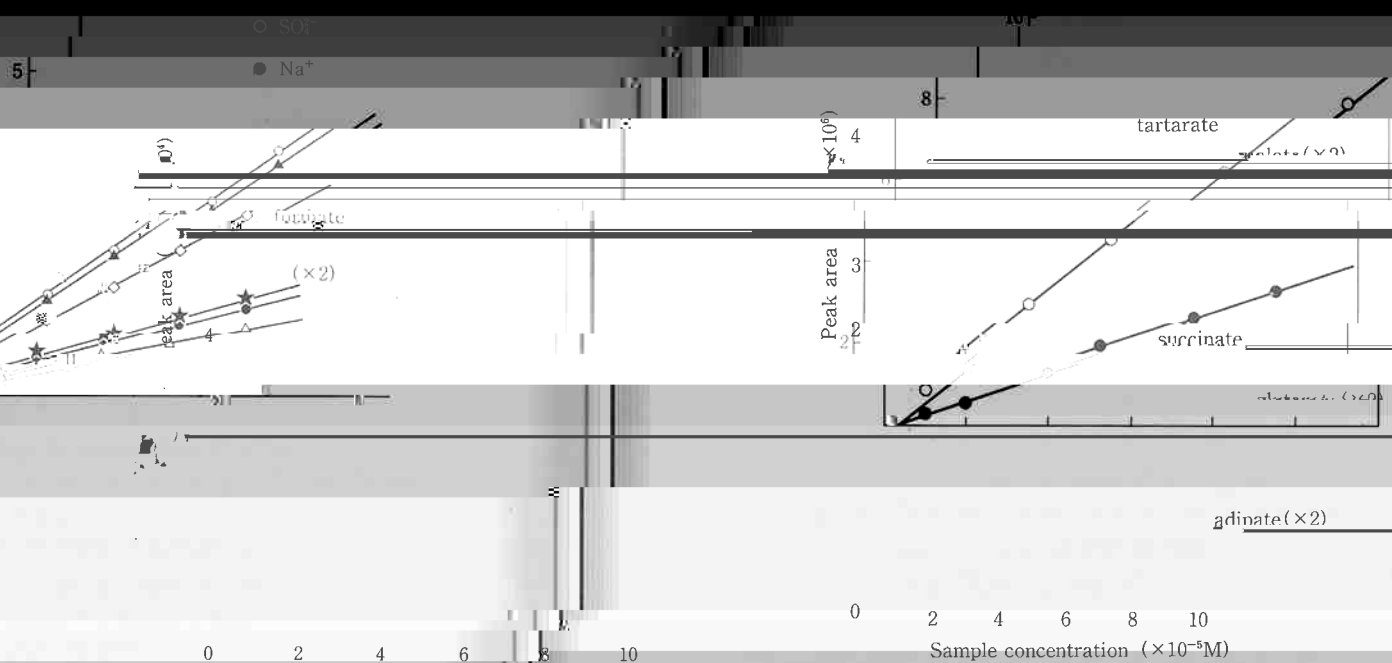
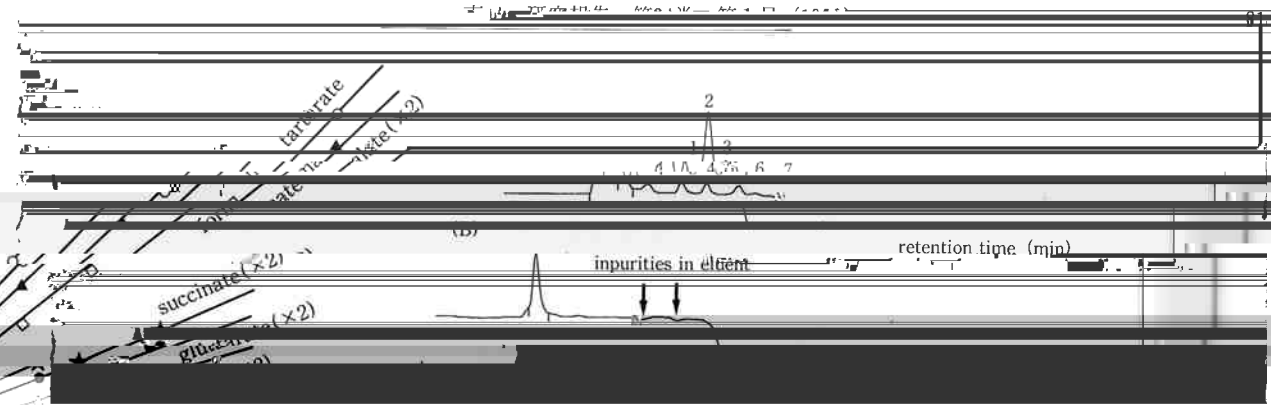


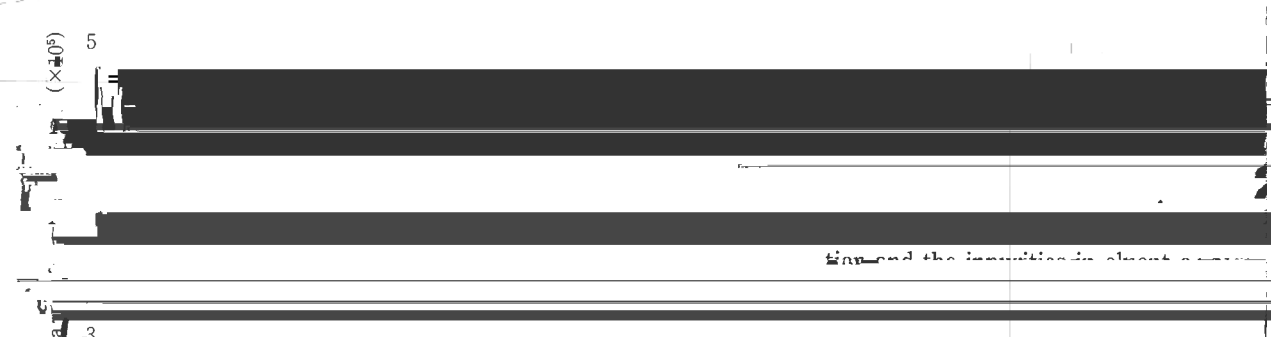
Fig. 8. The calibration curves for weak acids.

(10⁻⁵ M)

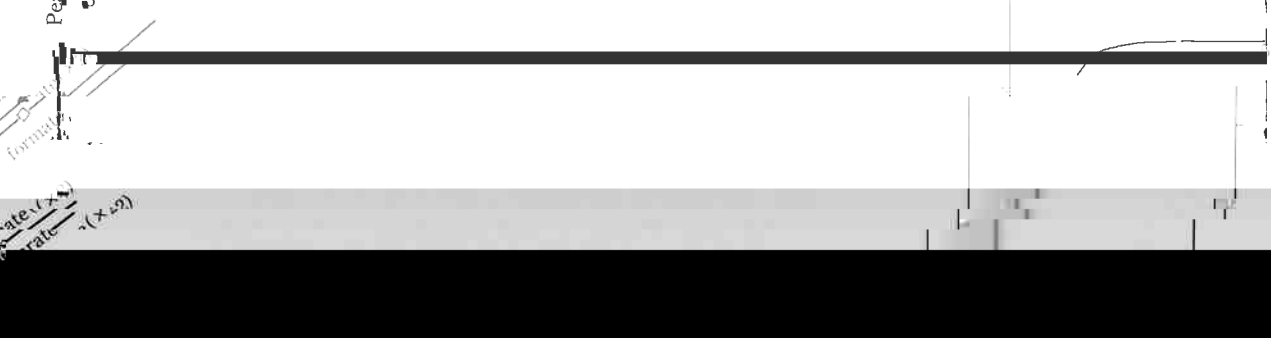
6



5



3



(x1)

