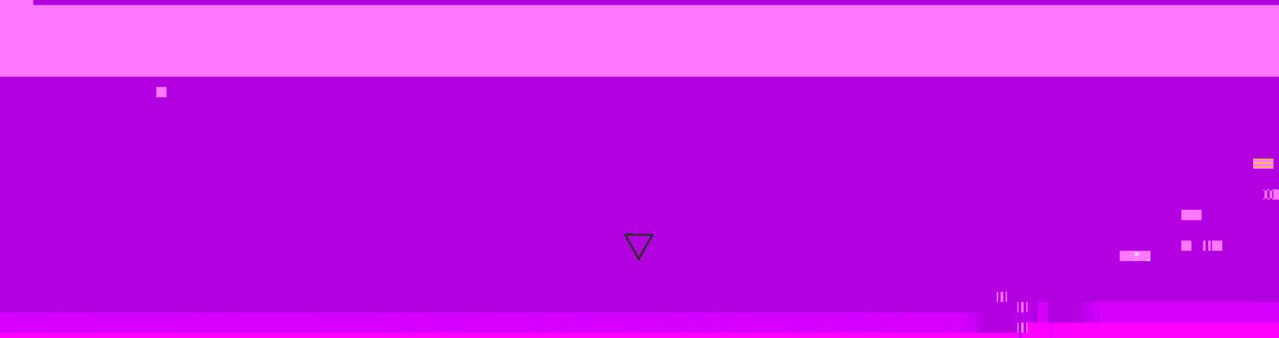
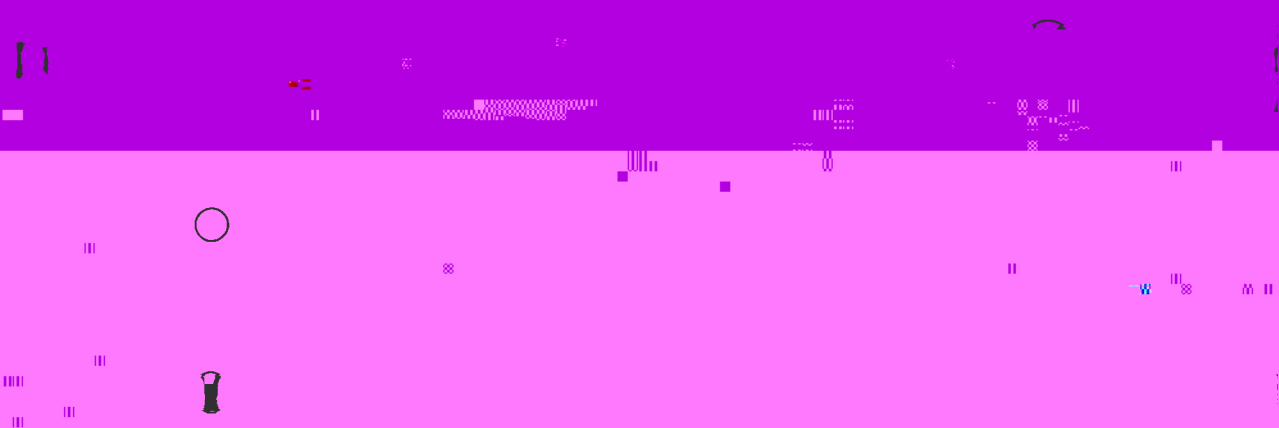
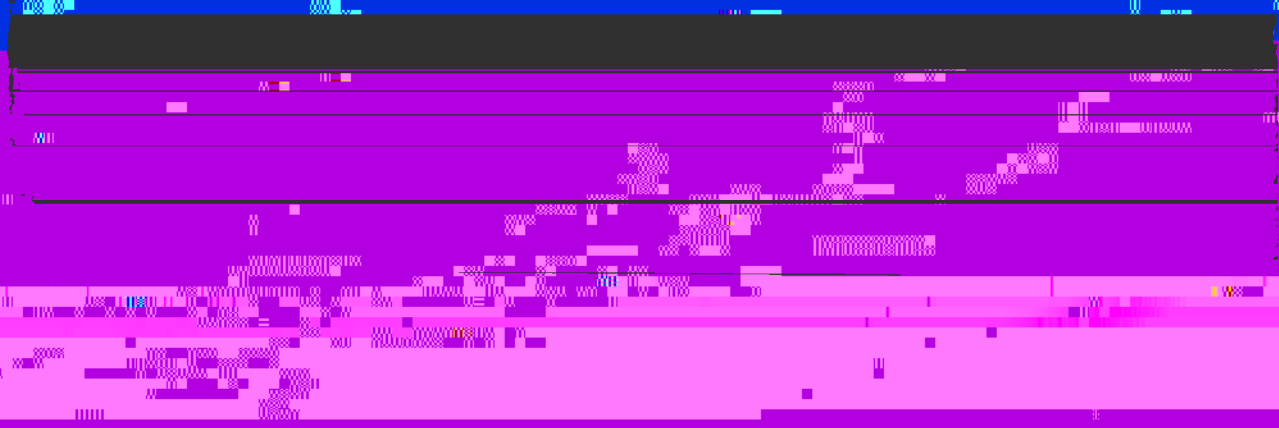
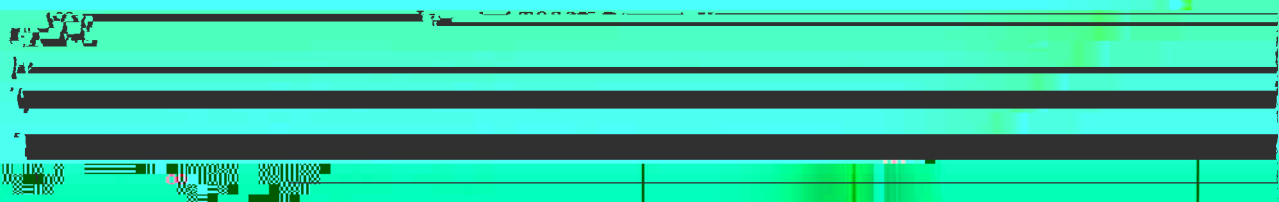
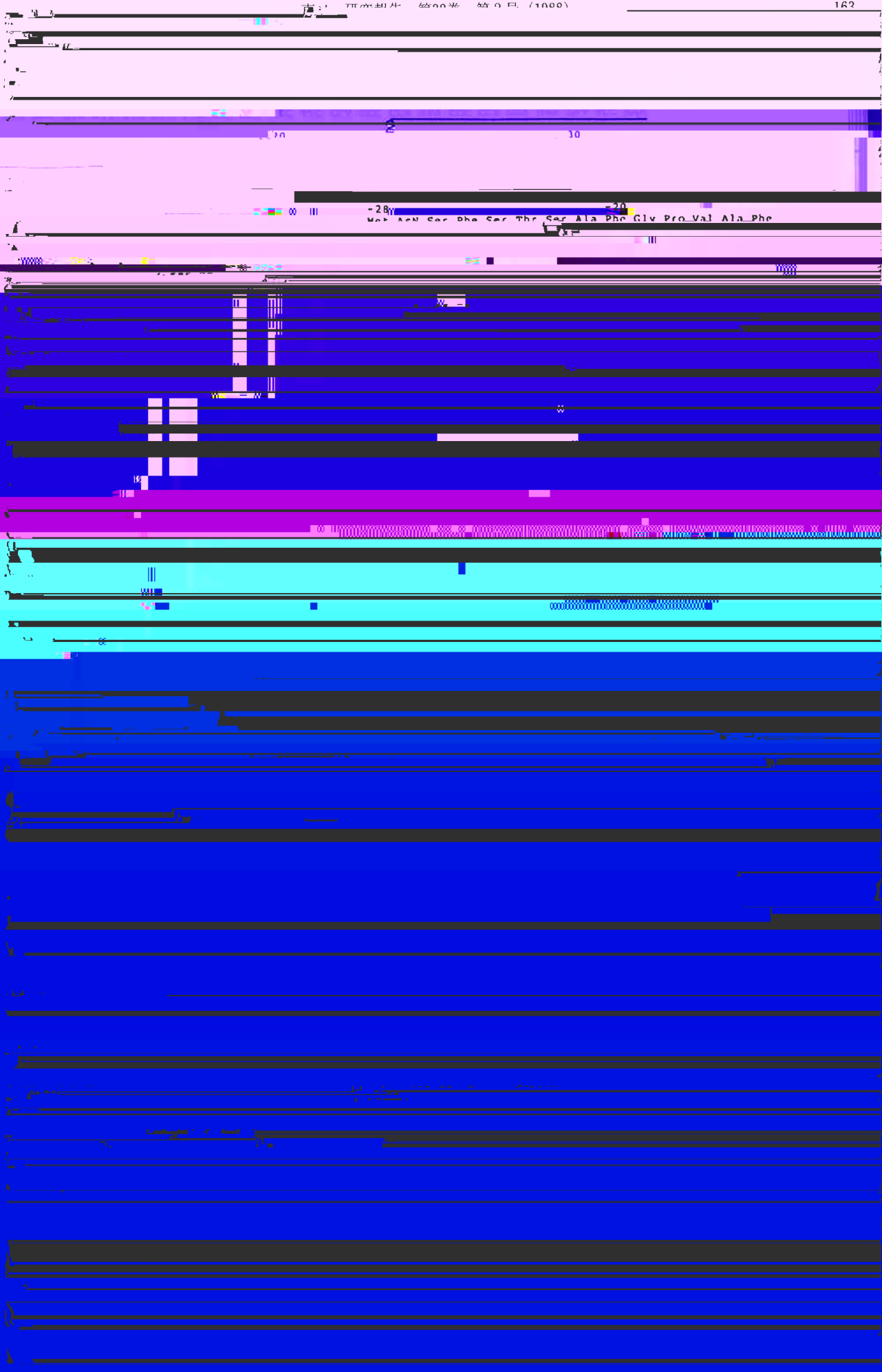


保	川	清
浅	越	弘
斎	藤	司





1. pBS1.2E3879

Handwritten notes:  $\frac{1}{2}$  and  $\frac{1}{2}$  with arrows pointing to a circular diagram.

Prac

BamH 1+  
Alu 1

Multiple cloning site:  
Hind III, Xba I, Spe I, Pst I, Kpn I, Sma I, Sal I, BamH I, Xba I, Spe I, Pst I, Kpn I, Sma I, Sal I

Met Rm

BamH

BamH

Alu BSF-2

ATG CCG GAT CCG CCG CCG

Protein sequence: Ile Leu Ile Cys Cys Asn Cys Asp Met Asp Met Asp Asp

G ATC CTC ATC GAA GGT CGT GAA TTC ATG CCG GTT CCG

Handwritten text at the top of the page, possibly a title or header.

Handwritten text in the upper section of the page.

Handwritten text in the middle section of the page.

Handwritten text in the lower middle section of the page.

Handwritten text in the lower section of the page.

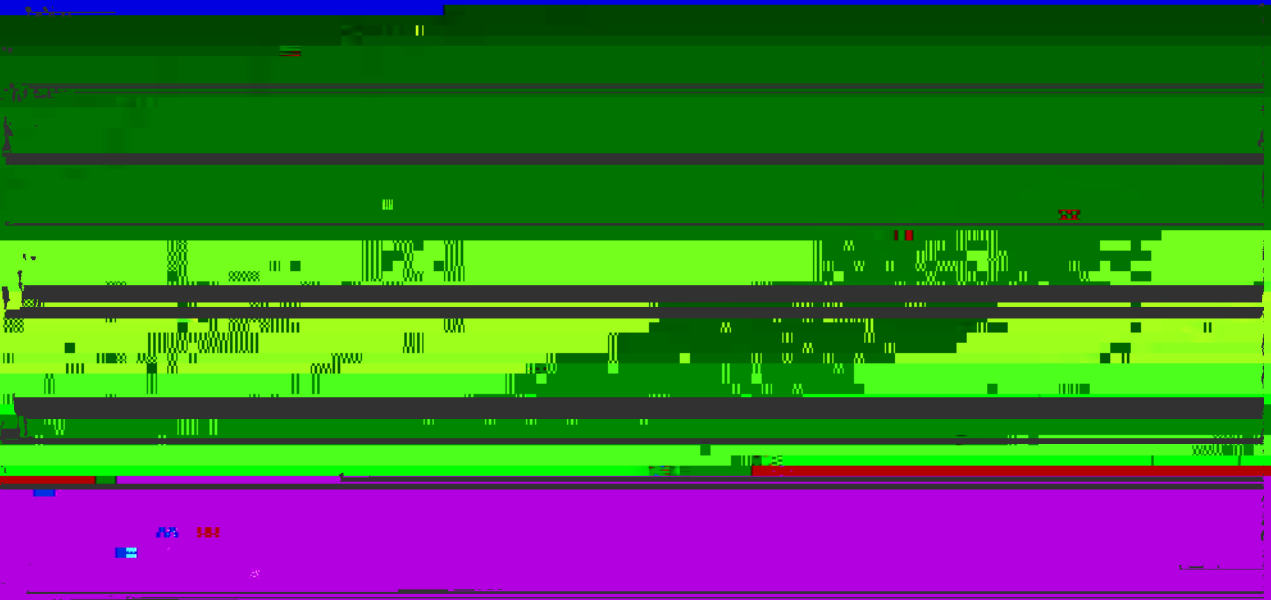
Handwritten text in the lower section of the page.

Handwritten text in the lower section of the page.

Handwritten text in the lower section of the page.

Handwritten text in the lower section of the page.

Handwritten text at the bottom of the page.



a)

1 2 3 4 5 6 7 8 9 10

100  
10000

188 192

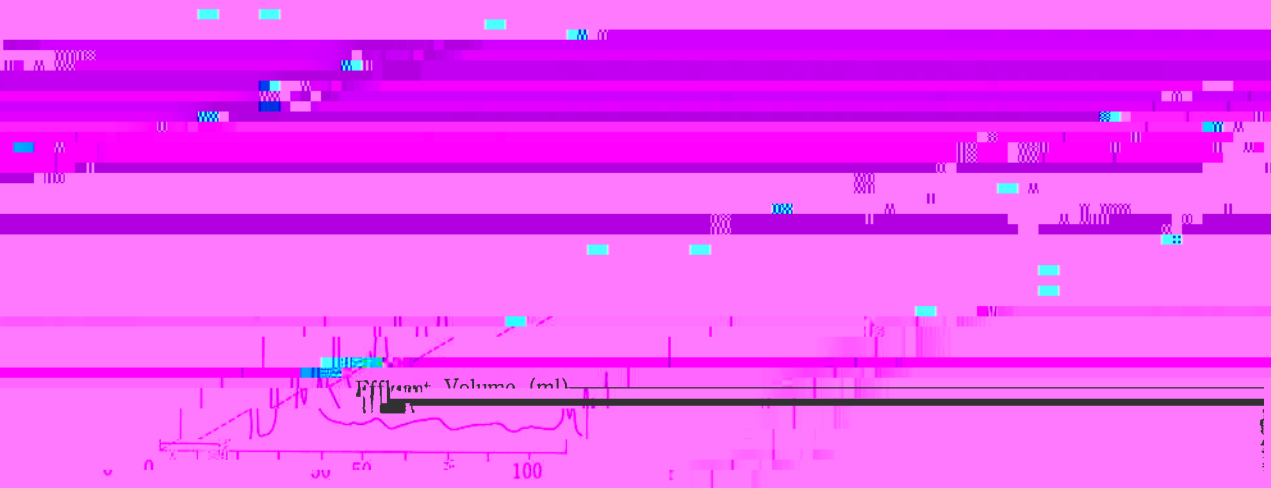
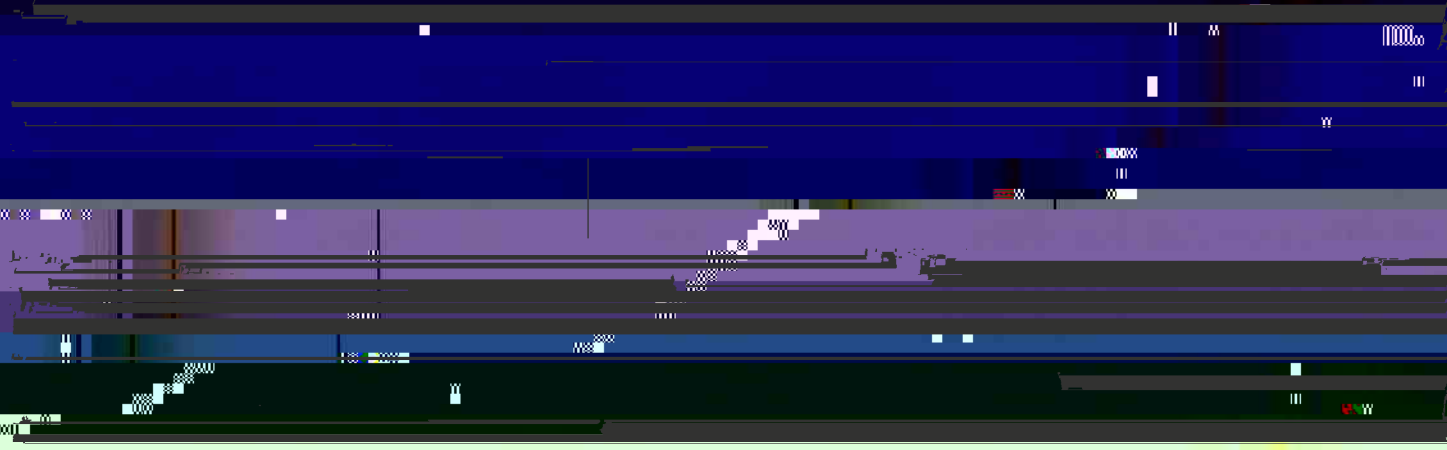
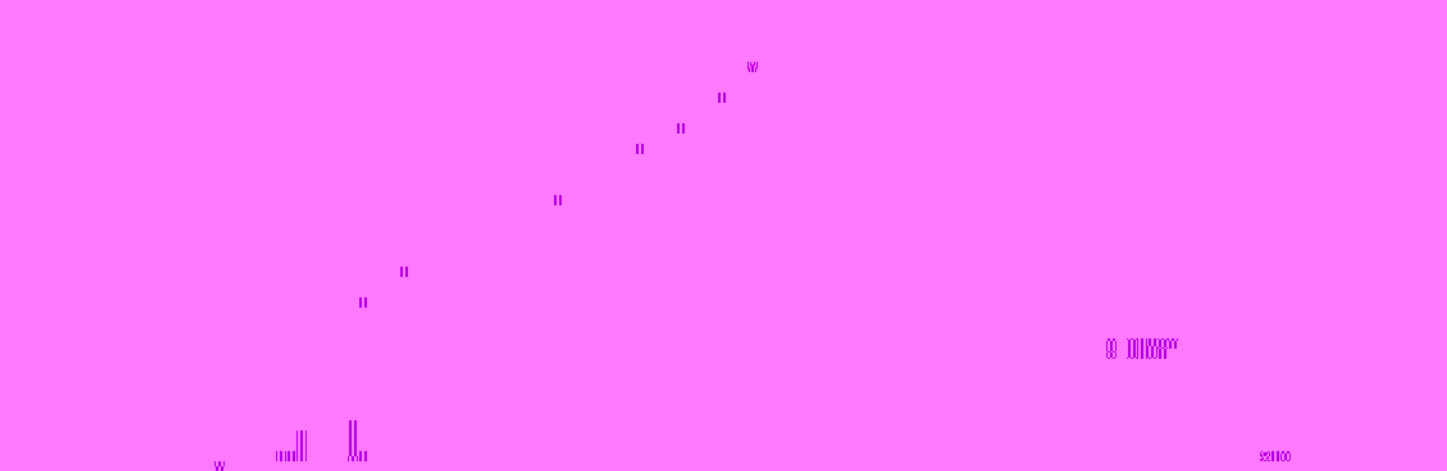
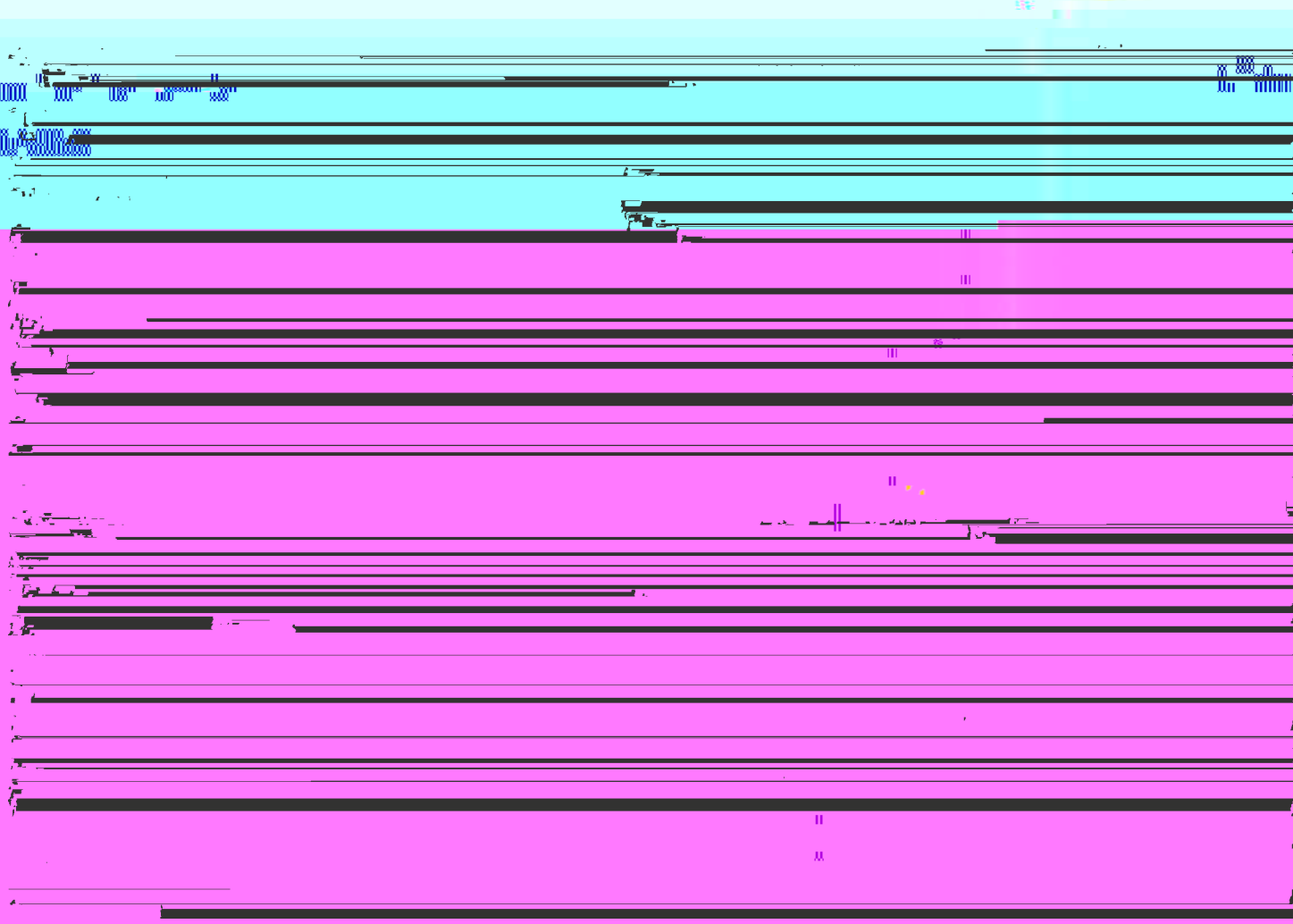


Fig. 7. (a) Gel filtration UPI solution settings of 100 ml elution volume.





1)



保川 清

氏名 浅越 義弘

者 者  
氏名 齋藤 貴司

著 者  
氏名 丸尾 直子