

且 廿 善 口

出 國 地 方

海 州 定 本

11

11



11

[The main body of the page is almost entirely obscured by heavy horizontal black bars, rendering the text illegible.]

Table 2. PAC MS conditions

0	2	4	6	8	10
---	---	---	---	---	----

Table 3. FGC Conditions

Pyrolyzer: Curie point type

Detector:  $^{63}\text{Ni}$  electron capture

Carrier gas: He 50 ml/min

Attenuation:  $32 \times 10^2$

Injection Port: 200°C

Injection Volume: 1  $\mu\text{l}$

Injection Rate: 100  $\mu\text{l}/\text{min}$

Injection Temperature: 200°C

Injection Volume: 1  $\mu\text{l}$

Injection Rate: 100  $\mu\text{l}/\text{min}$

Injection Temperature: 200°C

Injection Volume: 1  $\mu\text{l}$

Injection Rate: 100  $\mu\text{l}/\text{min}$

Injection Temperature: 200°C

Injection Volume: 1  $\mu\text{l}$

Injection Rate: 100  $\mu\text{l}/\text{min}$

Injection Temperature: 200°C

Injection Volume: 1  $\mu\text{l}$

Injection Rate: 100  $\mu\text{l}/\text{min}$

Injection Temperature: 200°C

Injection Volume: 1  $\mu\text{l}$

Injection Rate: 100  $\mu\text{l}/\text{min}$

Injection Temperature: 200°C

Injection Volume: 1  $\mu\text{l}$

Injection Rate: 100  $\mu\text{l}/\text{min}$

Injection Temperature: 200°C

Injection Volume: 1  $\mu\text{l}$

Injection Rate: 100  $\mu\text{l}/\text{min}$

Injection Temperature: 200°C

Injection Volume: 1  $\mu\text{l}$

Injection Rate: 100  $\mu\text{l}/\text{min}$

Injection Temperature: 200°C

Injection Volume: 1  $\mu\text{l}$

Injection Rate: 100  $\mu\text{l}/\text{min}$

Injection Temperature: 200°C

Injection Volume: 1  $\mu\text{l}$

Injection Rate: 100  $\mu\text{l}/\text{min}$

Injection Temperature: 200°C

Injection Volume: 1  $\mu\text{l}$

Injection Rate: 100  $\mu\text{l}/\text{min}$

Injection Temperature: 200°C

Injection Volume: 1  $\mu\text{l}$

Injection Rate: 100  $\mu\text{l}/\text{min}$

Injection Temperature: 200°C

Injection Volume: 1  $\mu\text{l}$

Injection Rate: 100  $\mu\text{l}/\text{min}$

Injection Temperature: 200°C

Injection Volume: 1  $\mu\text{l}$

Injection Rate: 100  $\mu\text{l}/\text{min}$

Injection Temperature: 200°C

Injection Volume: 1  $\mu\text{l}$

Injection Rate: 100  $\mu\text{l}/\text{min}$

Injection Temperature: 200°C

Injection Volume: 1  $\mu\text{l}$

Injection Rate: 100  $\mu\text{l}/\text{min}$

Injection Temperature: 200°C

Injection Volume: 1  $\mu\text{l}$

Injection Rate: 100  $\mu\text{l}/\text{min}$

Injection Temperature: 200°C

Injection Volume: 1  $\mu\text{l}$

Injection Rate: 100  $\mu\text{l}/\text{min}$

Injection Temperature: 200°C

Injection Volume: 1  $\mu\text{l}$

Injection Rate: 100  $\mu\text{l}/\text{min}$

Injection Temperature: 200°C

Injection Volume: 1  $\mu\text{l}$

Injection Rate: 100  $\mu\text{l}/\text{min}$

a) アクリル系加工助剤の分析を FGC で行う場合、  
MMA のピークは 1.5 分前後に現れる。

Carrier gas: He 50 ml/min

Attenuation:  $32 \times 10^2$

Injection Port: 200°C

Injection Volume: 1  $\mu\text{l}$

Injection Rate: 100  $\mu\text{l}/\text{min}$

Injection Temperature: 200°C

Injection Volume: 1  $\mu\text{l}$

Injection Rate: 100  $\mu\text{l}/\text{min}$

Injection Temperature: 200°C

Injection Volume: 1  $\mu\text{l}$

Injection Rate: 100  $\mu\text{l}/\text{min}$

Injection Temperature: 200°C

Injection Volume: 1  $\mu\text{l}$

Injection Rate: 100  $\mu\text{l}/\text{min}$

Injection Temperature: 200°C

Injection Volume: 1  $\mu\text{l}$

Injection Rate: 100  $\mu\text{l}/\text{min}$

Injection Temperature: 200°C

Injection Volume: 1  $\mu\text{l}$

Injection Rate: 100  $\mu\text{l}/\text{min}$

Injection Temperature: 200°C

Injection Volume: 1  $\mu\text{l}$

Injection Rate: 100  $\mu\text{l}/\text{min}$

b) Con oil LB-550

[REDACTED]

[REDACTED]

[REDACTED]

[REDACTED]

[REDACTED]

[REDACTED]

[REDACTED]

[REDACTED]

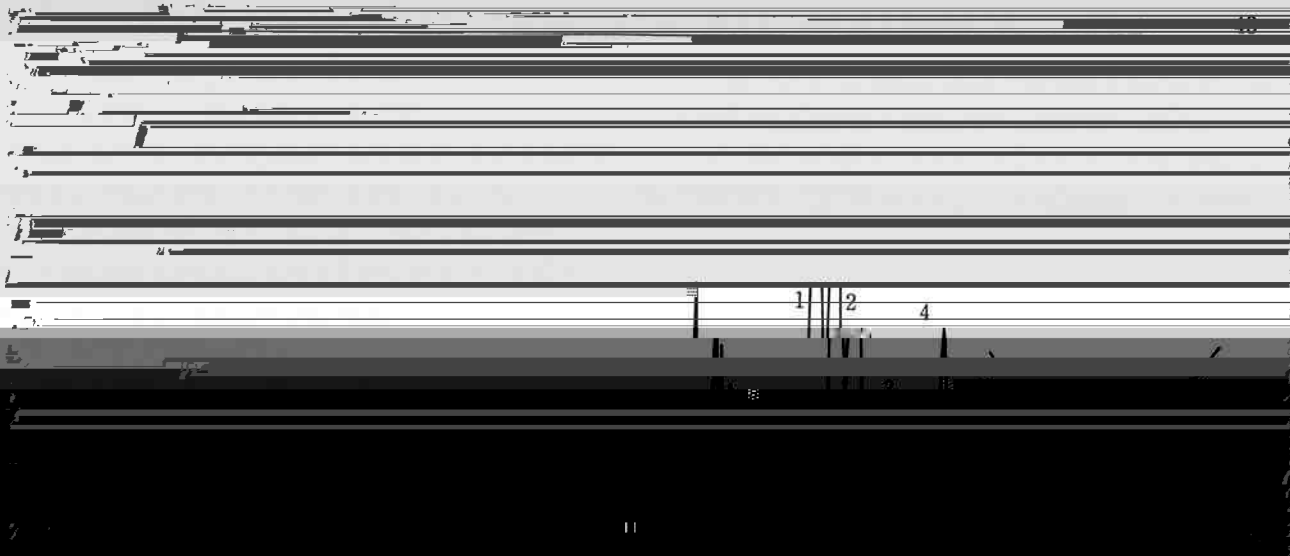
[REDACTED]

[REDACTED]

[REDACTED]

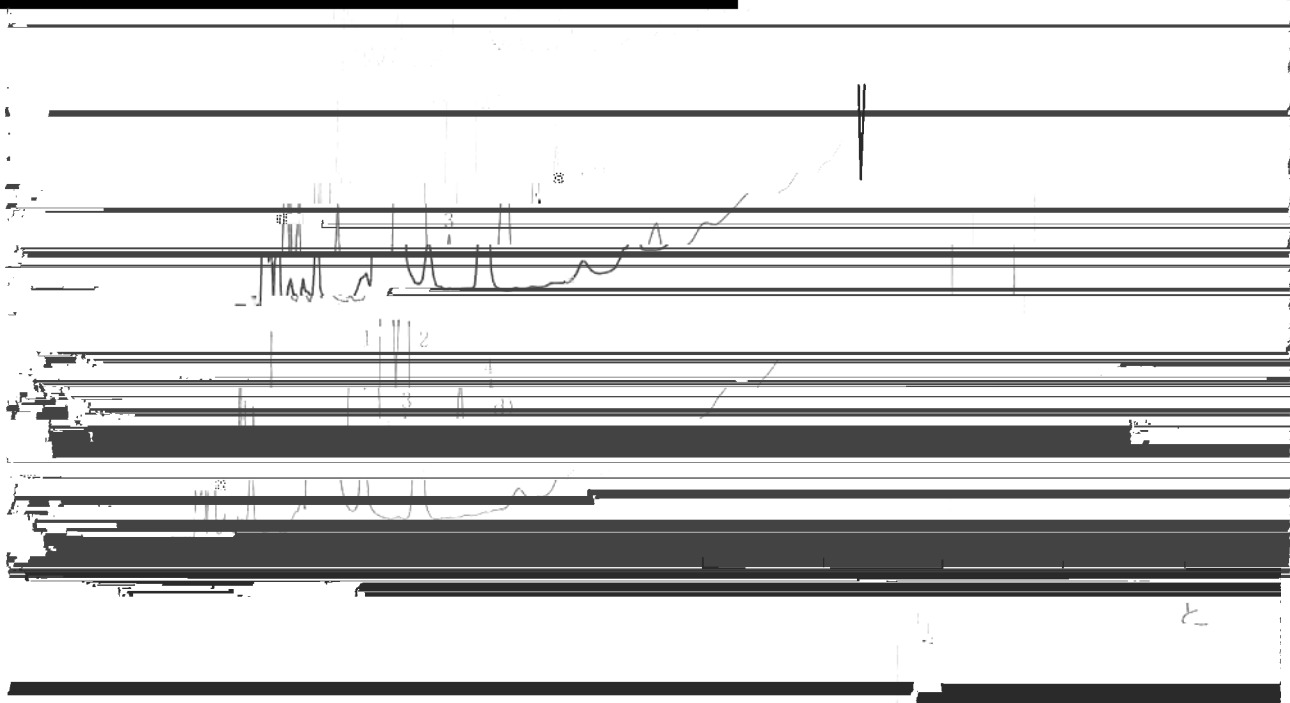
[REDACTED]

[REDACTED]



A(M) : MMA のピーク面積

1) 各種マクリル系加工助剂の重合反応モニタリング



4. ま め

Retention time/min

