

馬  
室  
松  
多

信  
敷  
芳

迫  
下  
田

一  
駿  
光

SECRET

[REDACTED]

Application

Ions

[REDACTED]

$$t_0 = \frac{\pi r^2 L}{V} \dots (6)$$

$k_B'$

$L$

$\neq$

U. L. / TOBACCO...

7200

800

XXXXXXXXXX



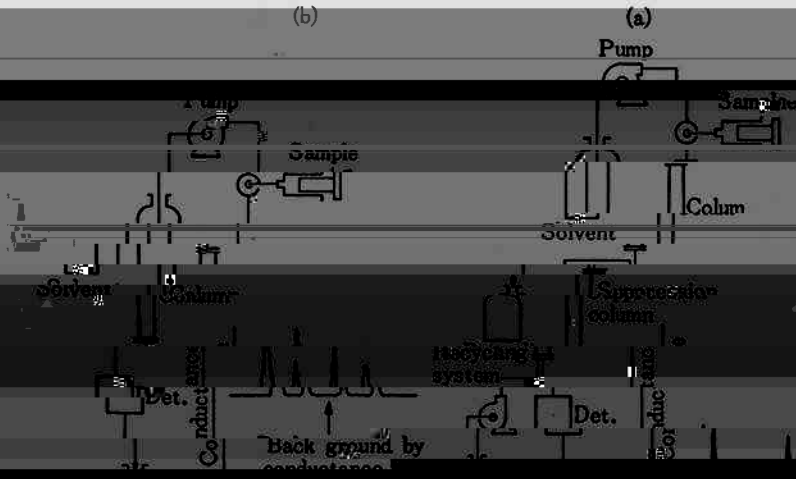


Fig. 4. Ion chromatograph by electrical conductivity.

Injection port valve

Control

Injection

Det.

Flow

Power

Drain valve

Flow direction of ILC CO<sub>2</sub>

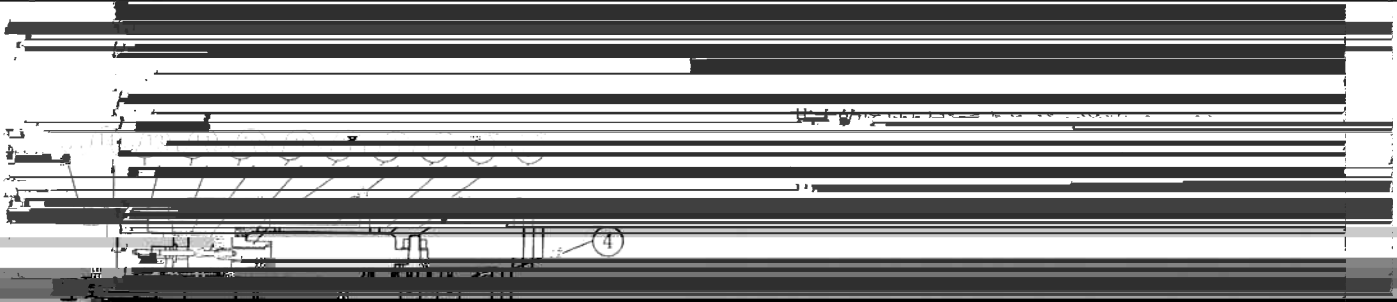
Pole 5Phase

Stroke L 12.7mm

Plunger dia 3.175mm

Capacity 100ul/stroke

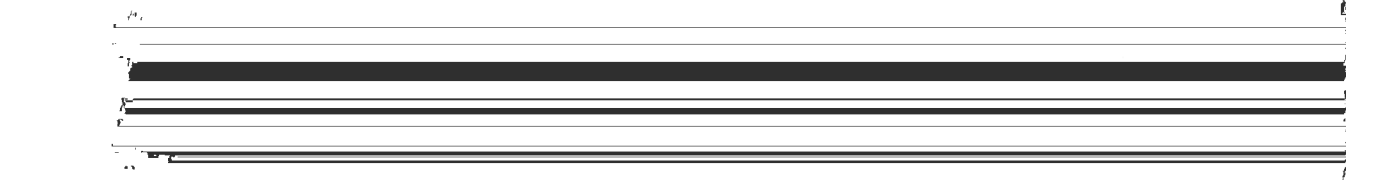
Flow direction of ILC CO<sub>2</sub>



III IIIIII A III III III W Y W

II

26







正徳三年癸卯十一月

いせんくろまろ

いせんくろまろ

いせんくろまろ

[Redacted text block]

[Redacted text block]

正徳三年癸卯十一月

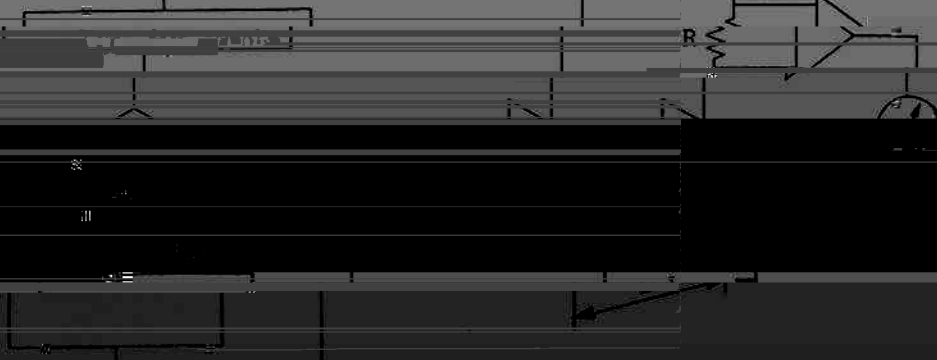
いせんくろまろ

[Redacted text block]

22

23

Start



Reference data

Assumptions

Yes On the

calculation

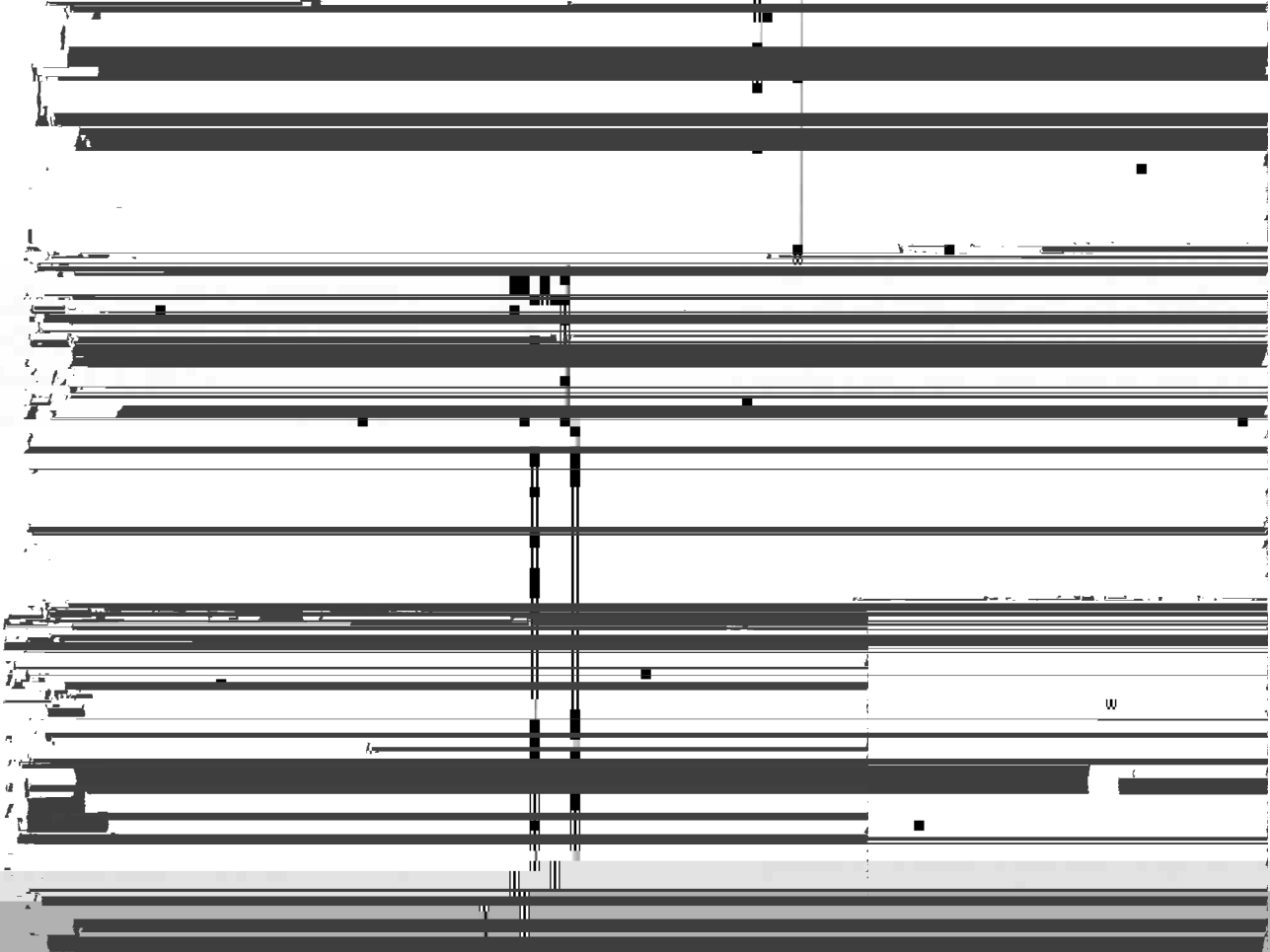
$E = K \cdot I / A$

Resistance

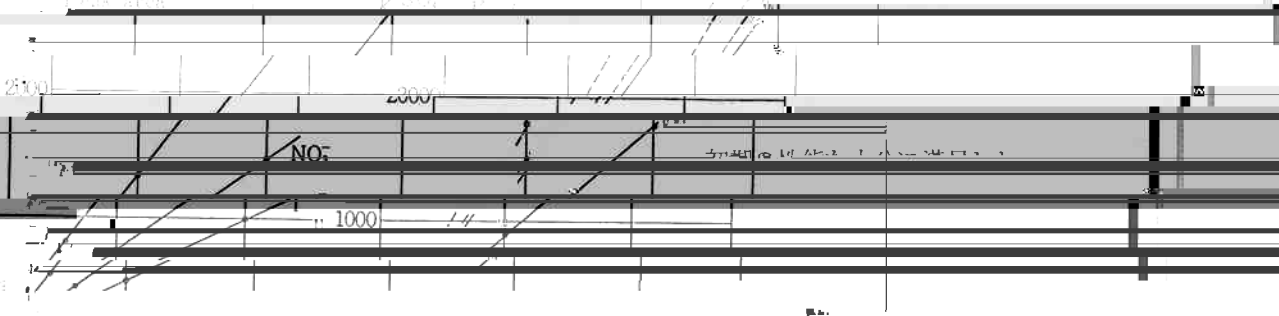
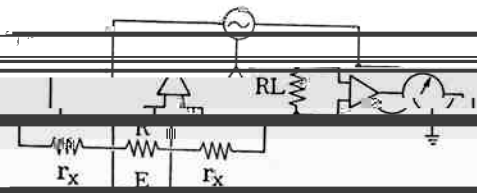
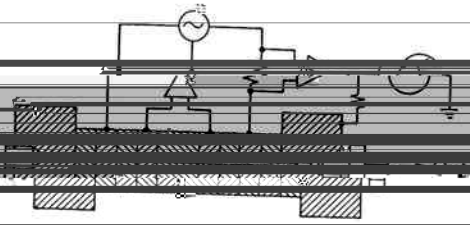
Constant

L/A . Constant of cell

On Off time set



(a) 検出器の性能



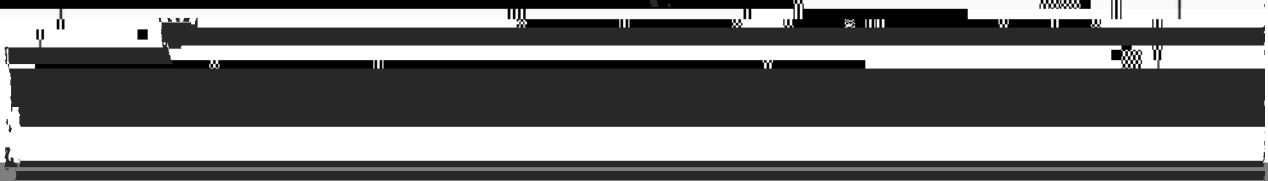
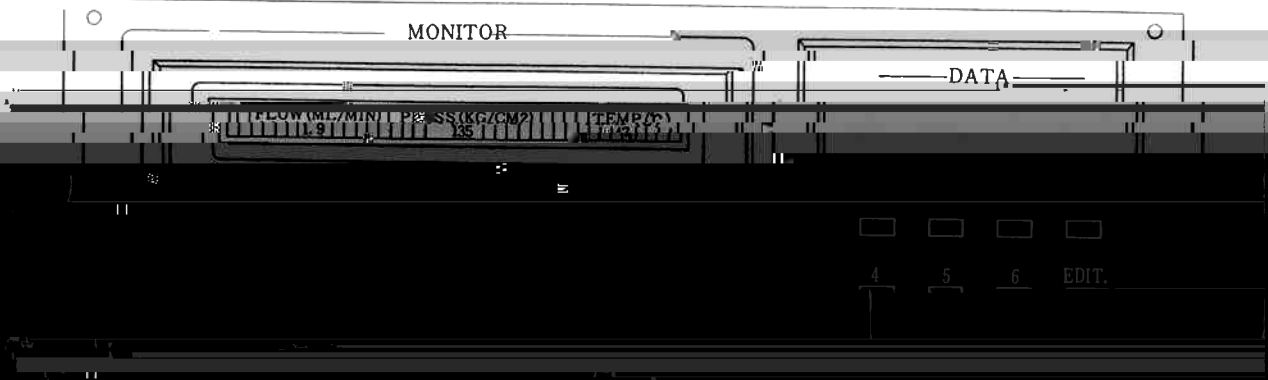
コントローラ内のワンボード CPU に取り込まれ、時分

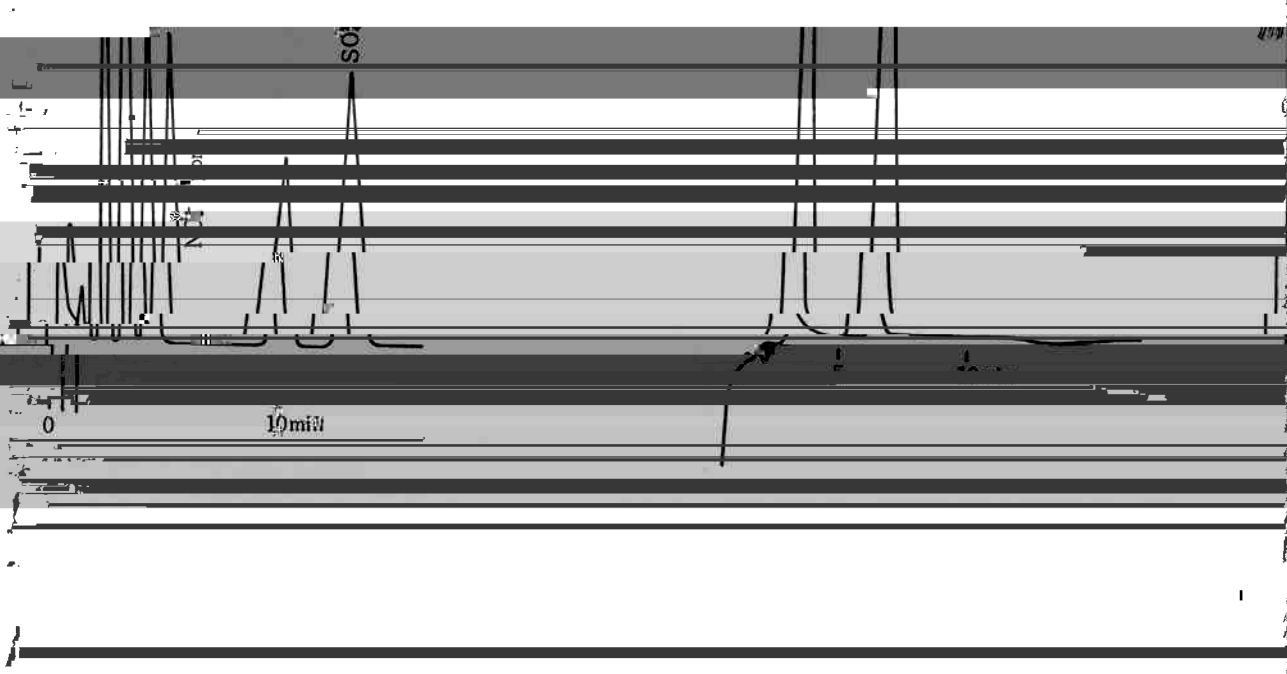
名を登録する。

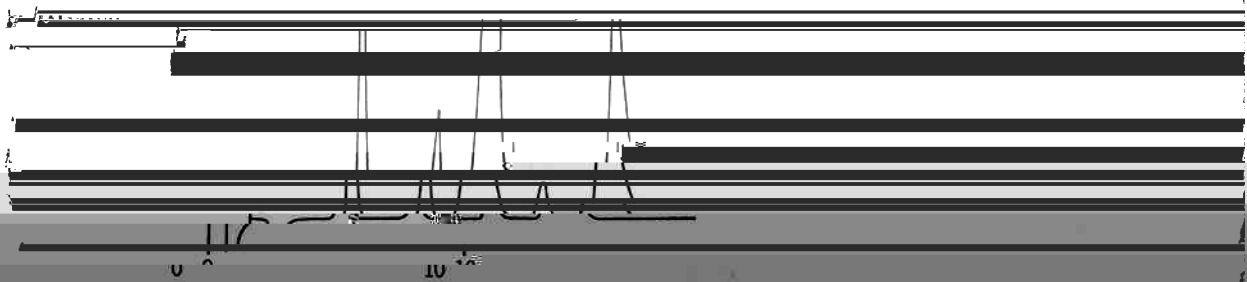
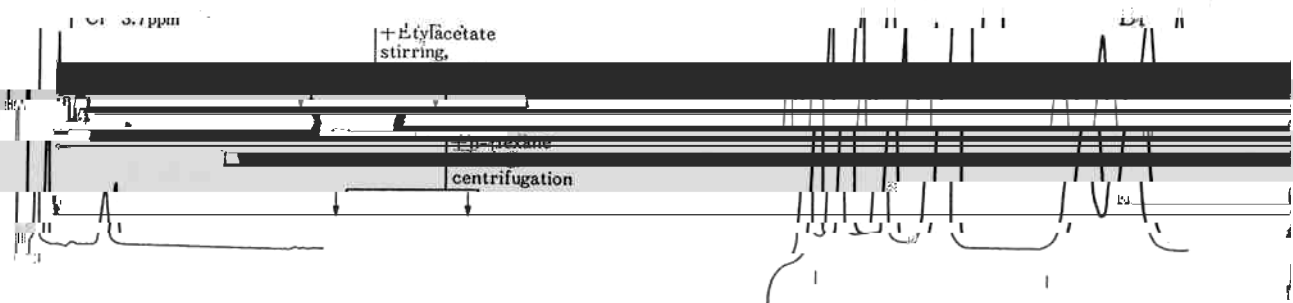
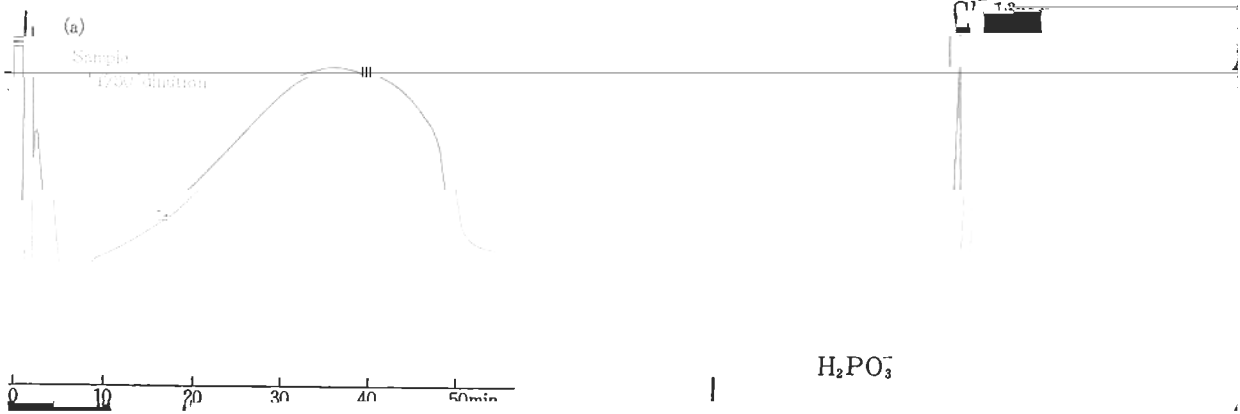
した、標準試料を打込ると自動的に登録されこの

試験で標準料との同定を行う

TRANSIF・同定を行う際のJLテソソ ンタイムの註







[2] IC-520 赤外線放射の応用

と

Fig 17 赤外線放射の応用 (IC-520) の概要

より選択係数の小さいイオンは負の電位に捕獲され

