

G-15

(μm) 20-40
0.1 μm

Figure 1. 1000x



...



12

11

3.0

Number of optical flats ($\times 10^{-3}$)

200

G-15

G-25

[3] Apparatus

Fig 3 Chamber 4.

* II

separation and analysis system

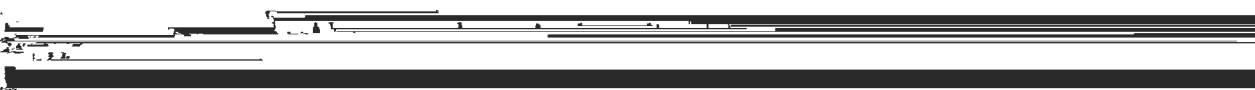
pump Model SI-1211H was used to

The samples of the oligomer...

15mg

sample is injected below 100 μ l, "viscous fingering" causes peak broadening.

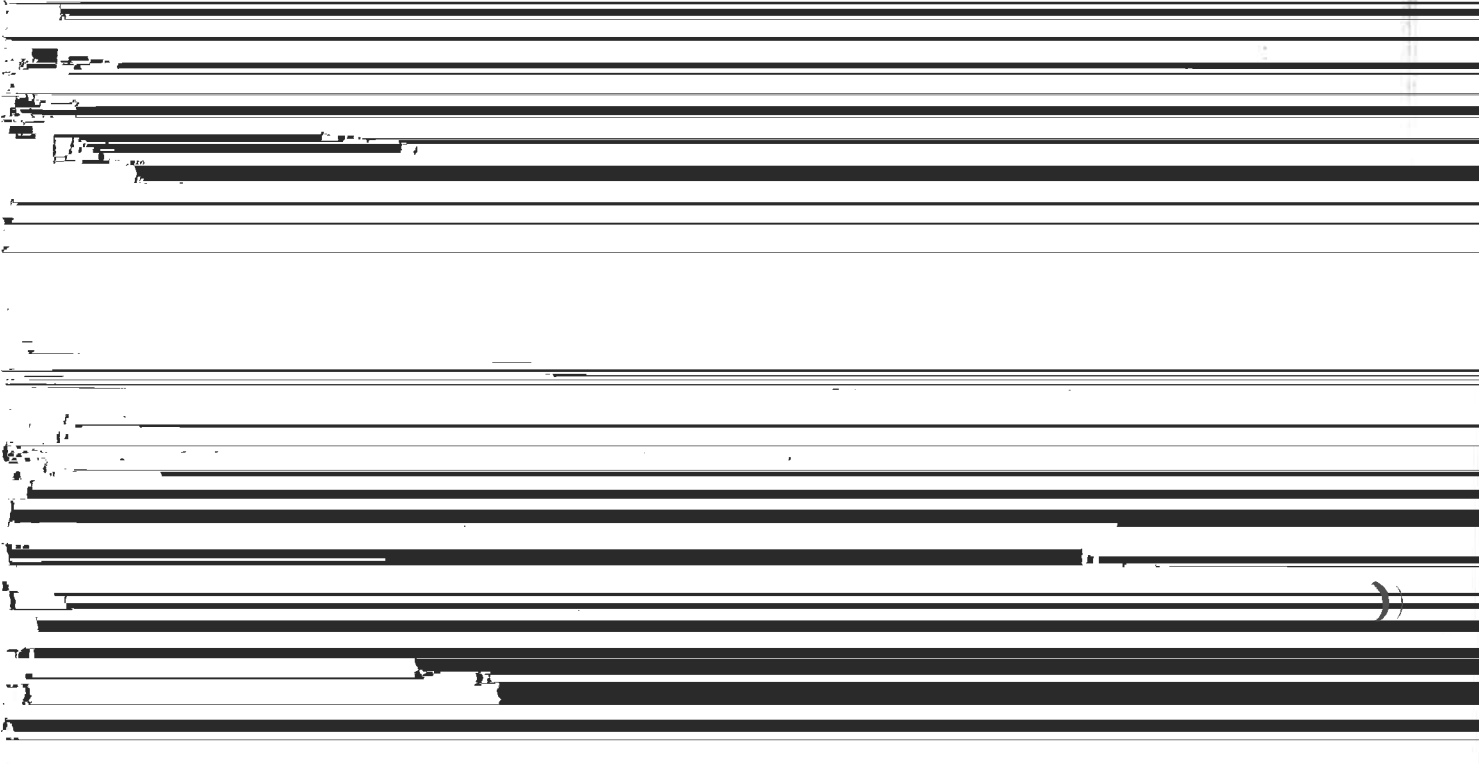
From these result measuring condition of



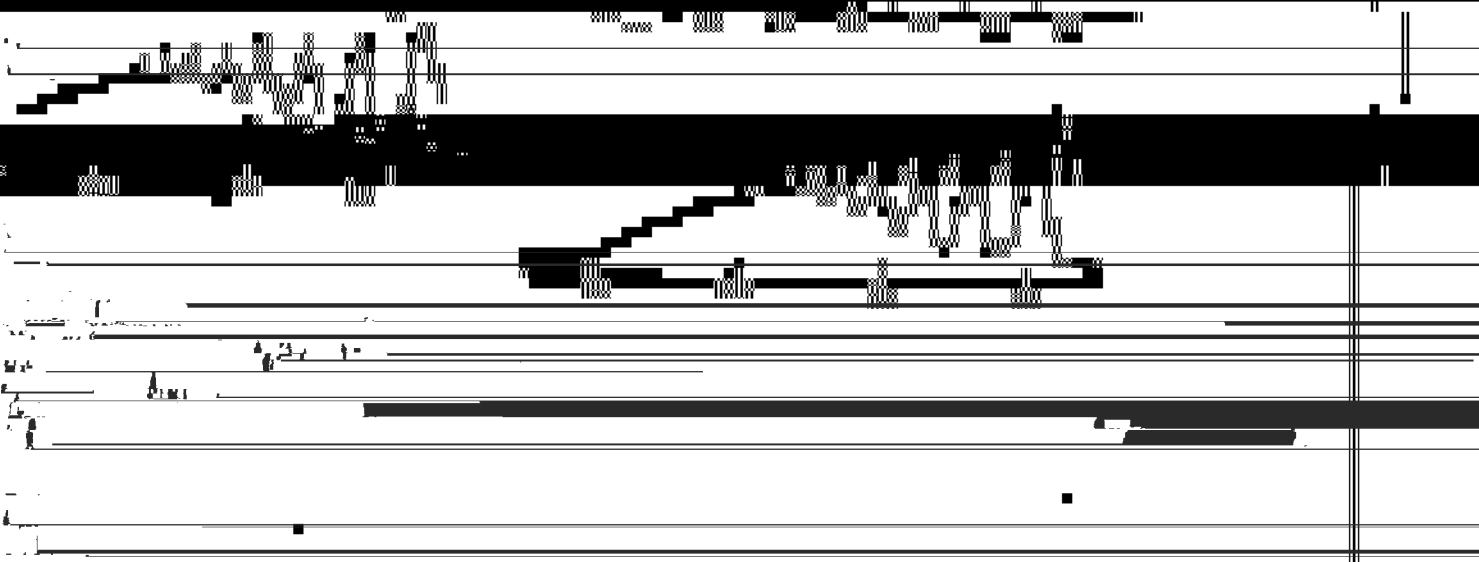
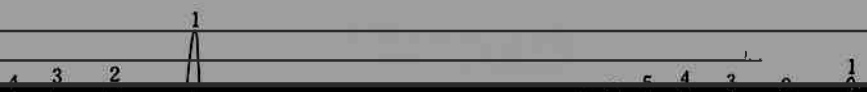
Calibration curve for Testosterone HPLC

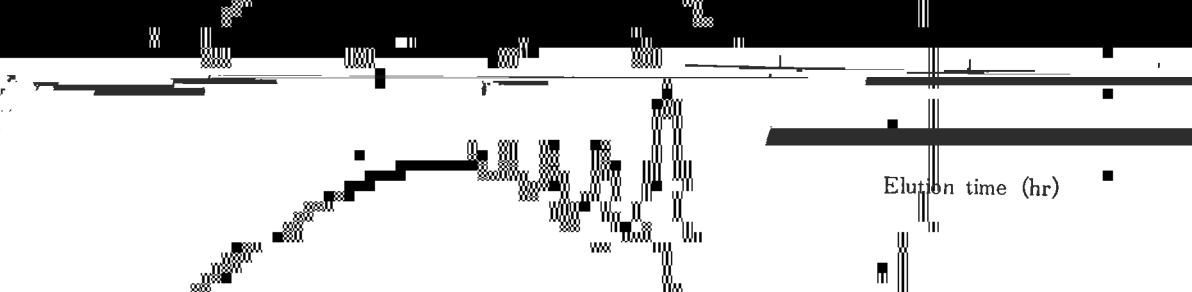
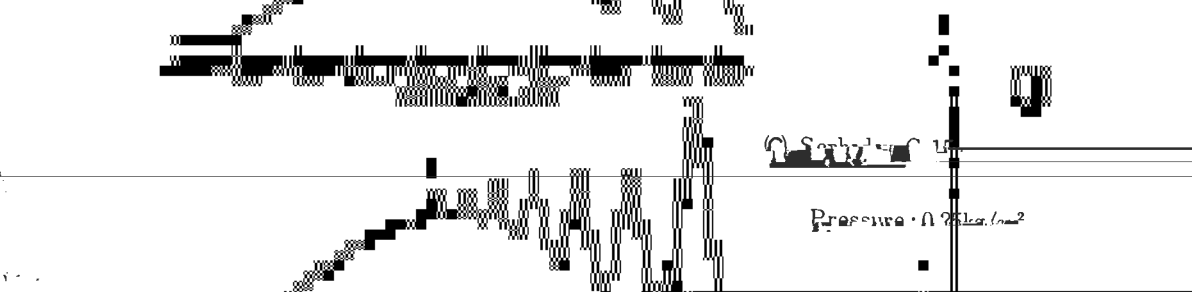
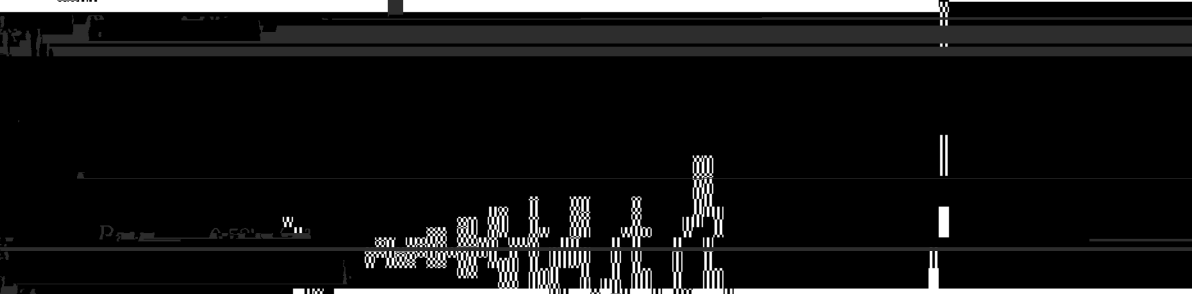
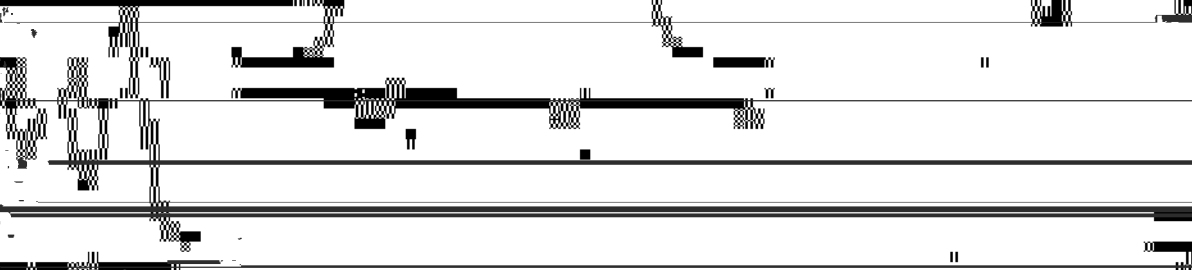
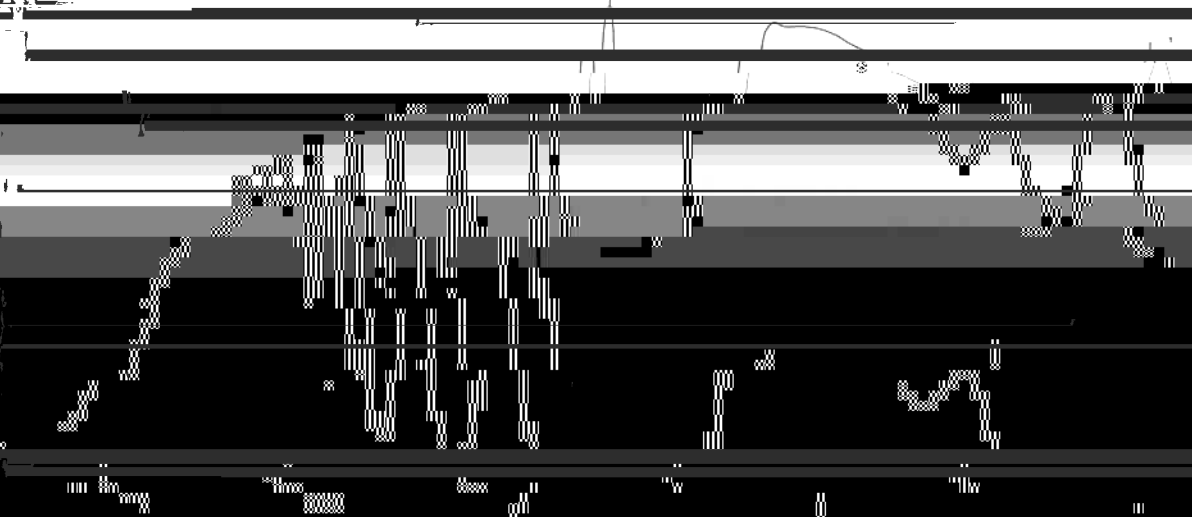
40S

lical



11





Pressure: 0.20 bar

Elution time (hr)

Pressure: 0.20 bar

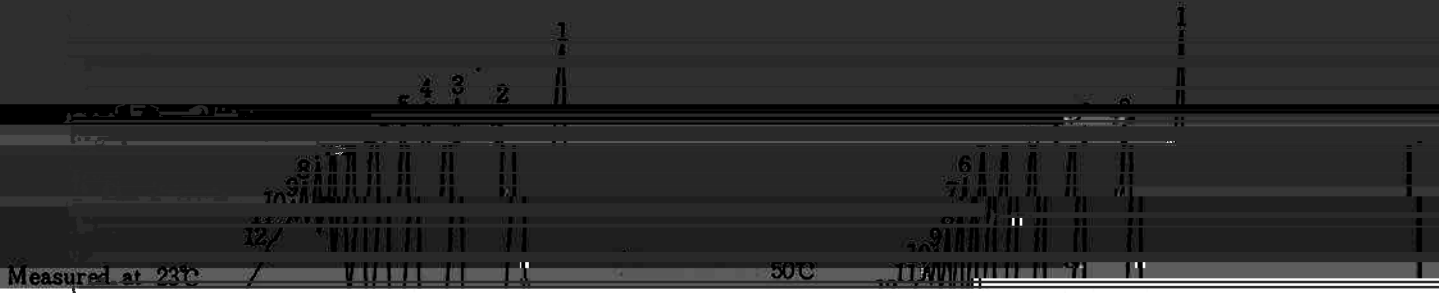
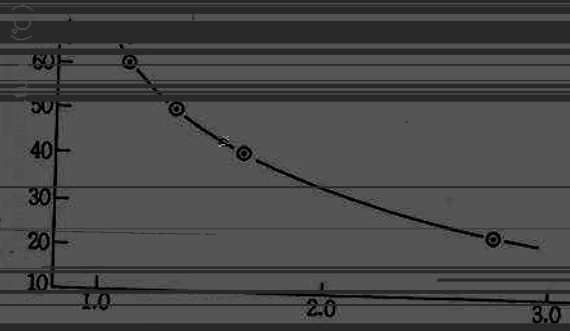
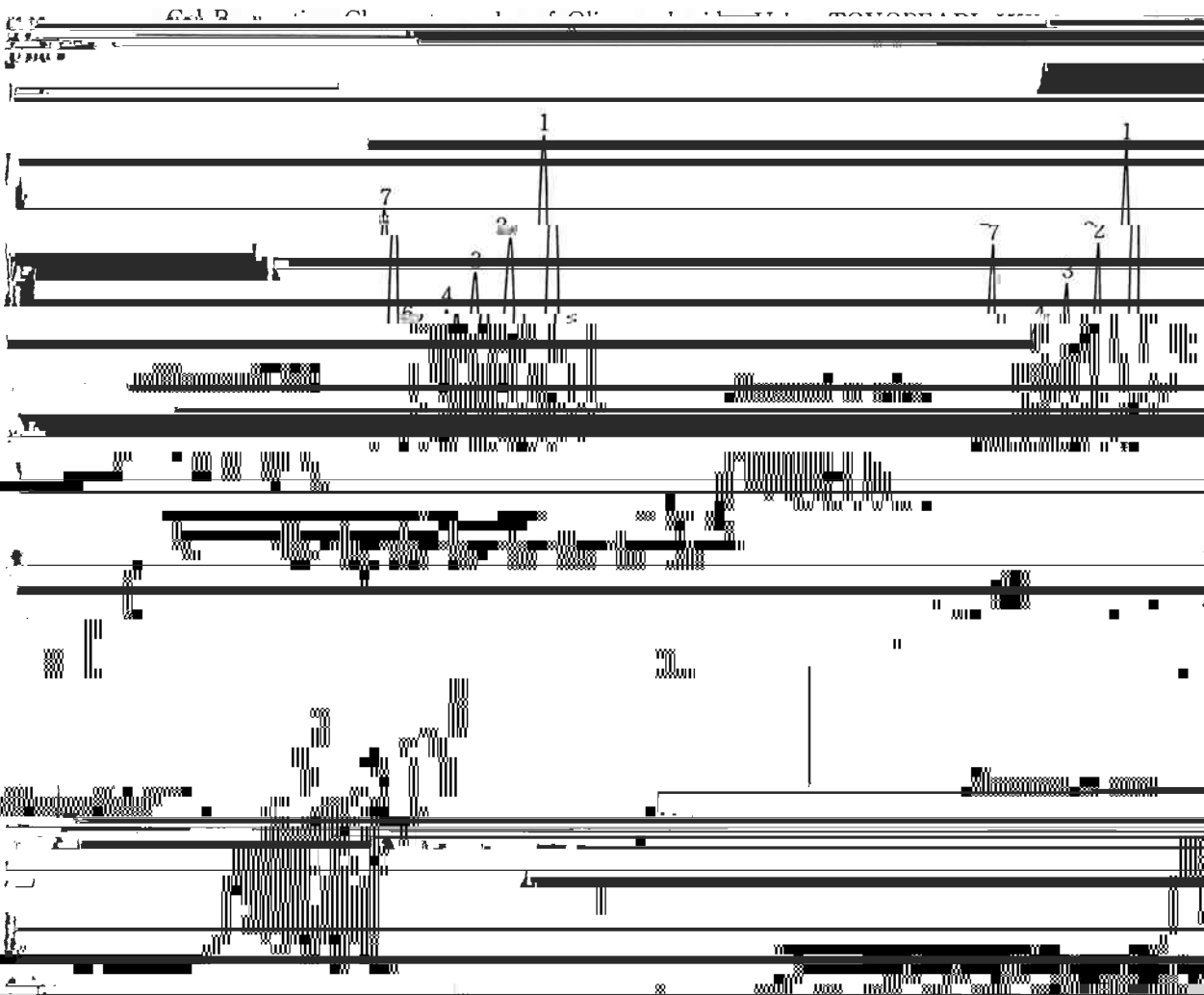


Fig. 11. Gelatin Amino Acids



Elution time (hr)

1

Elution time (hr)

