



深野 幸

上野景平*



激



1. 2000 1.1.17 - Sample: 440118001 - 1.1.17

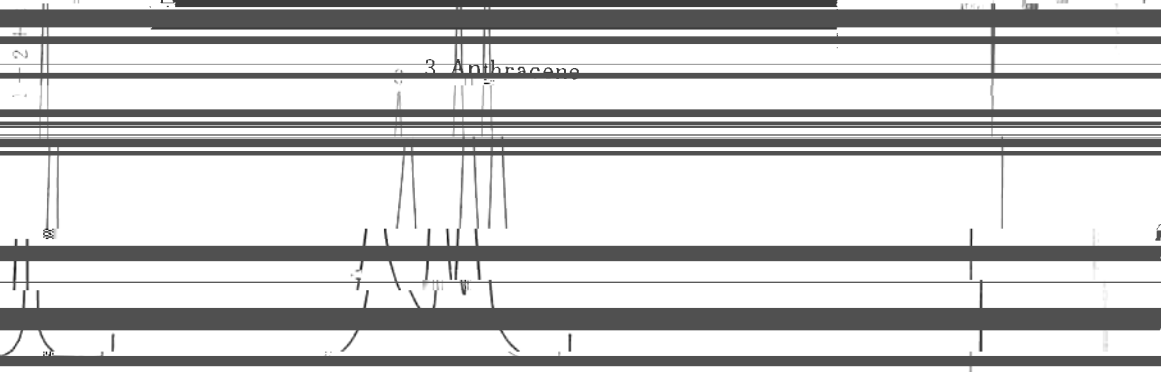
Methanol 2.5 ml/min

1.000 cm⁻¹

1. DMSO

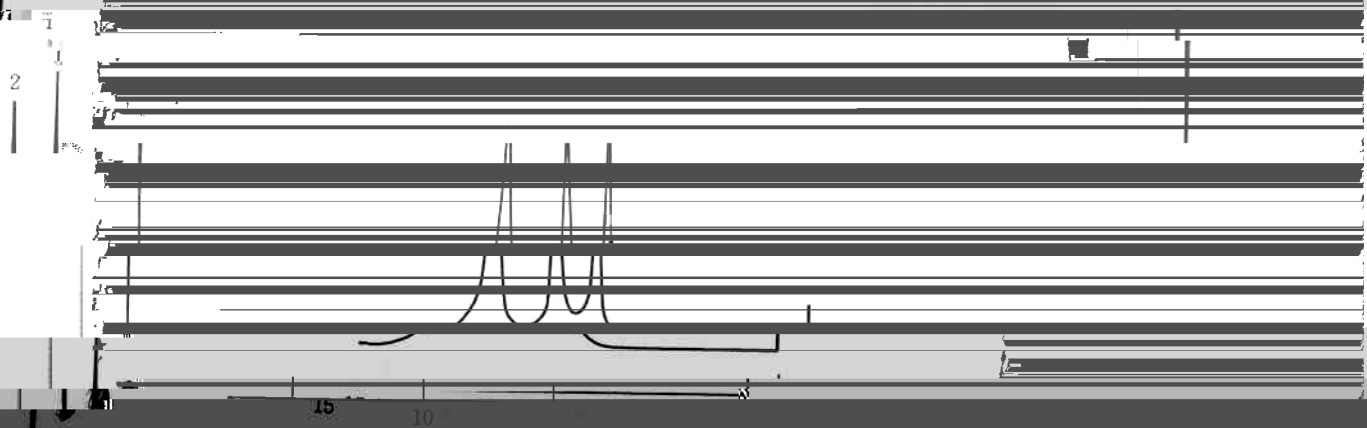
2. Nucleol...

3. Anhydraceno



10 5 0

time (min)

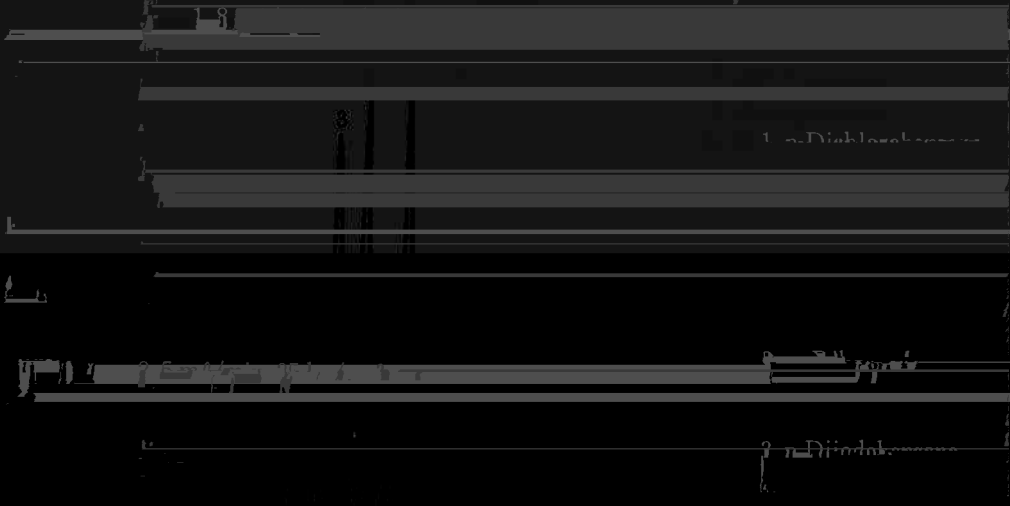


time

Fig.

gel.

Methanol 90 vol % / H₂O 10 vol %



time (min)

Fig. 2

(min)

Fig. 3

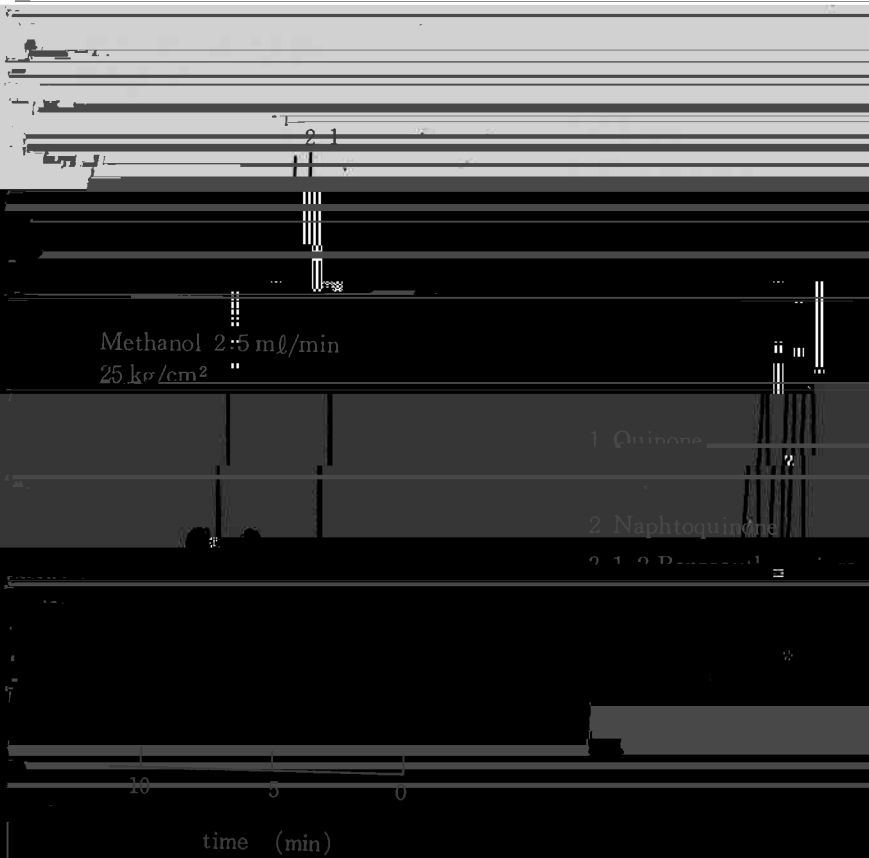
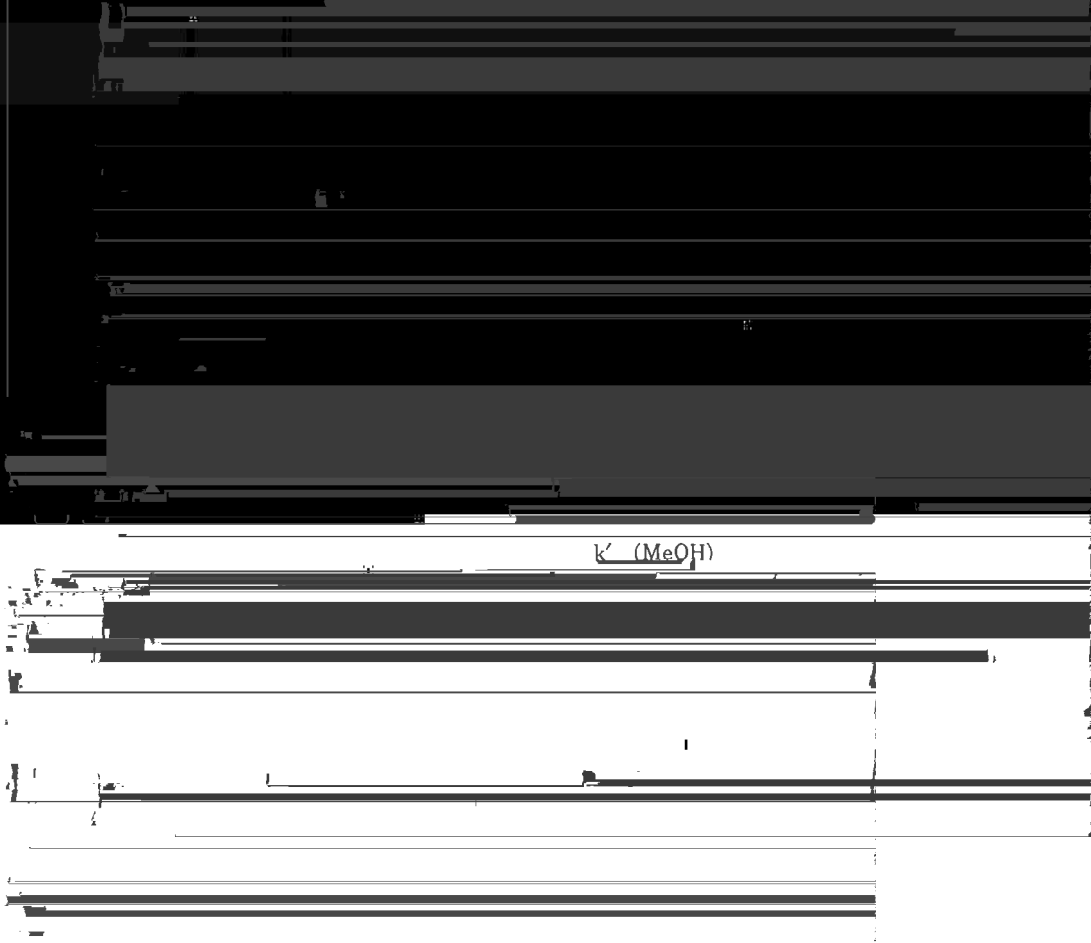
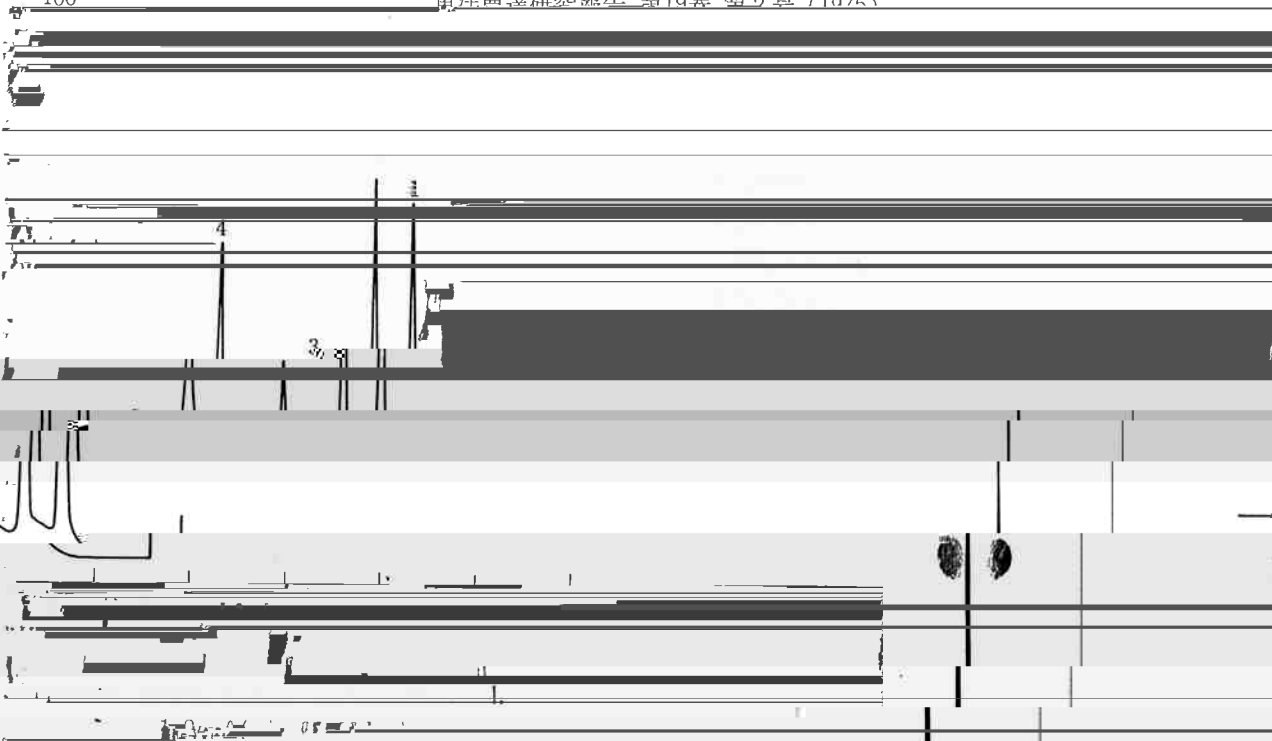


Fig. 4 Separation by reversed-phase column





1	Diethyl
2	Benzene
3	Naphthalene
4	Anthracene
5	Pyrene

ge