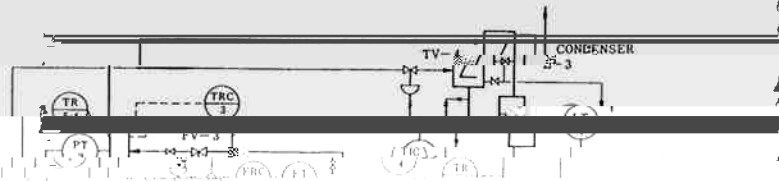


富田昇

角田宏之

古さがき

化学プロセスの自動化が在り北の各社に於て



OVERHEAD TANK
V-1

FEED PUMP P-1
FEED TANK T-1

WATER PUMP P-3

AT

FEED TANK T

side pipe.

15

The vent valve is

a step
set point
modified.

TIME, MIN

Niche

(legle)

Error due to a ... high

ES

TIME, 2

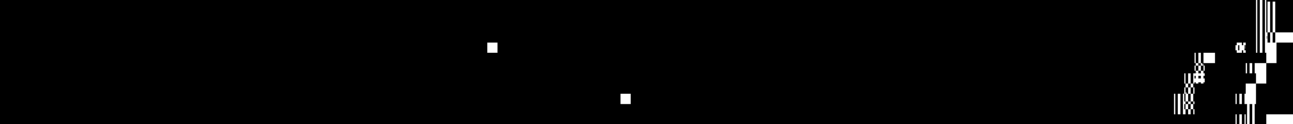
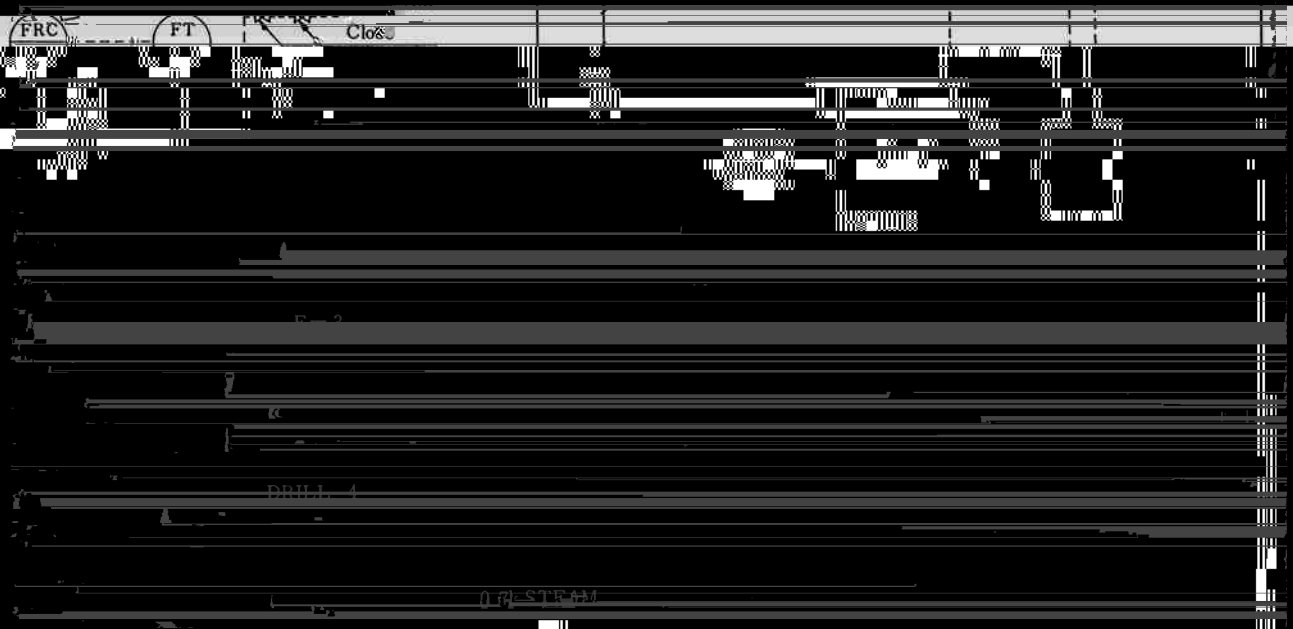
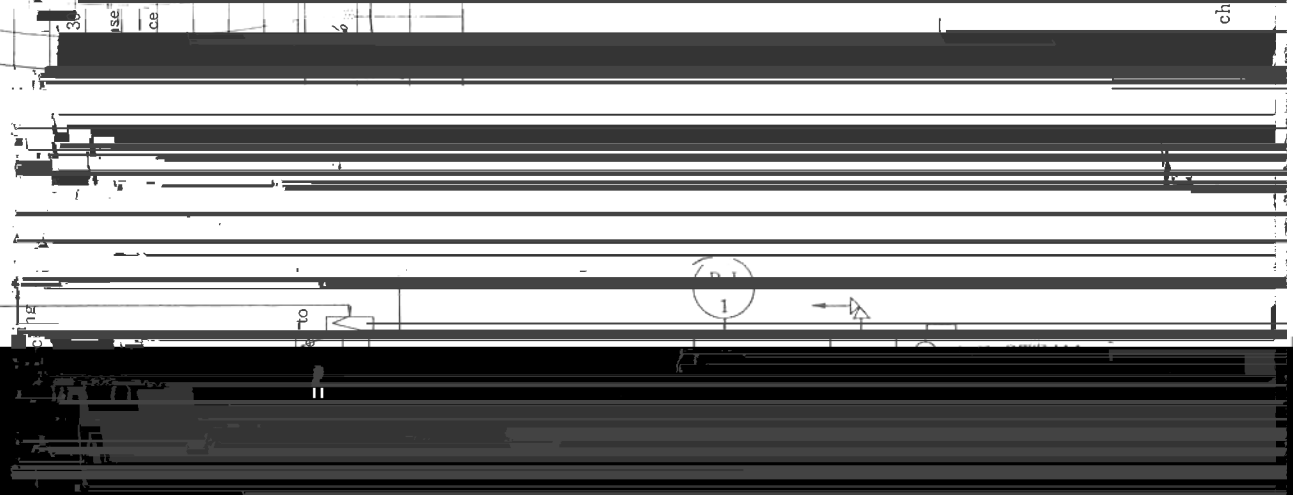
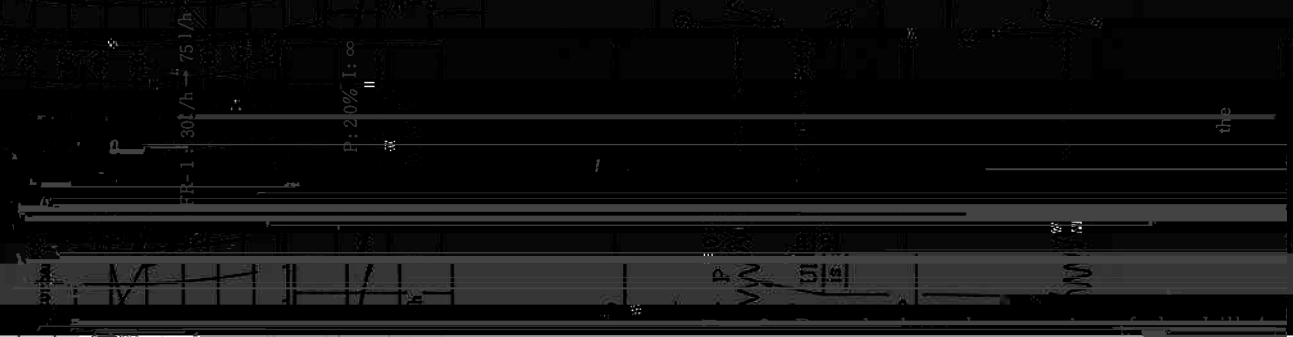
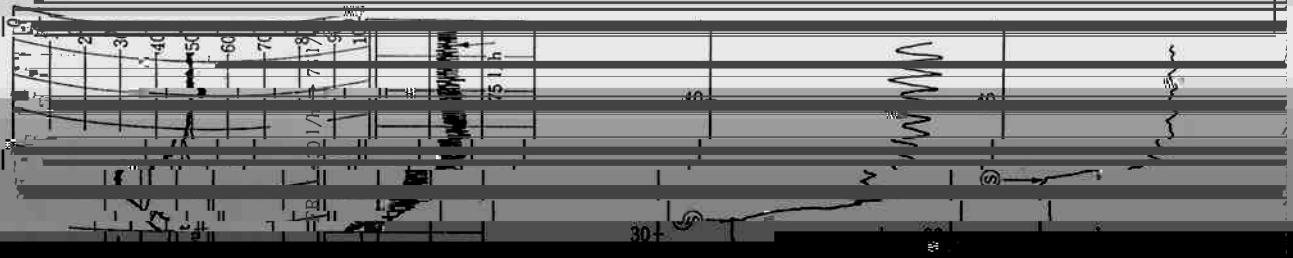
DRILL 3

TIME, 1

FY-11/4

Ultimate-sensit
method is appli

*

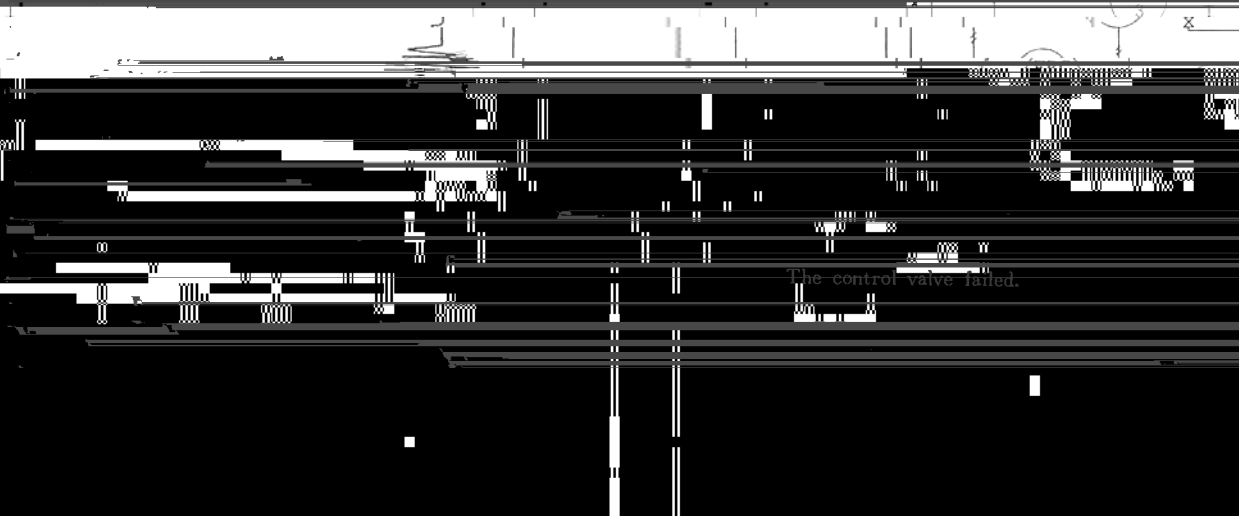
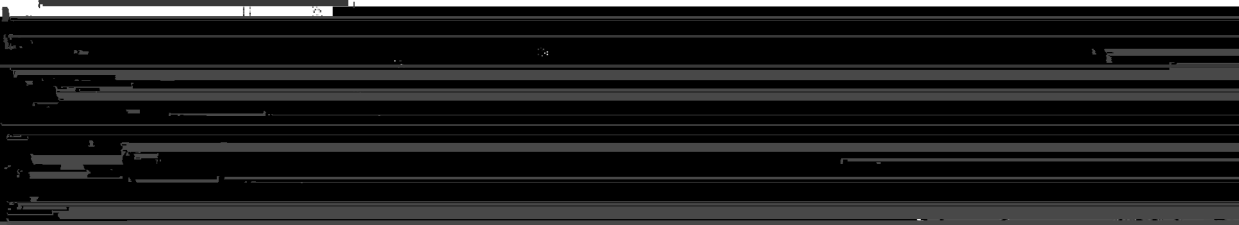




FRC OUTPUT %

min

the operation of the drill 7



Tag No	Action
--------	--------

power failure

Switched to auto. operation

from the by-pass valve

Switched to the manual

control for the bypass valve

to the deviation, while auto.