

[REDACTED]

田 中 和 安

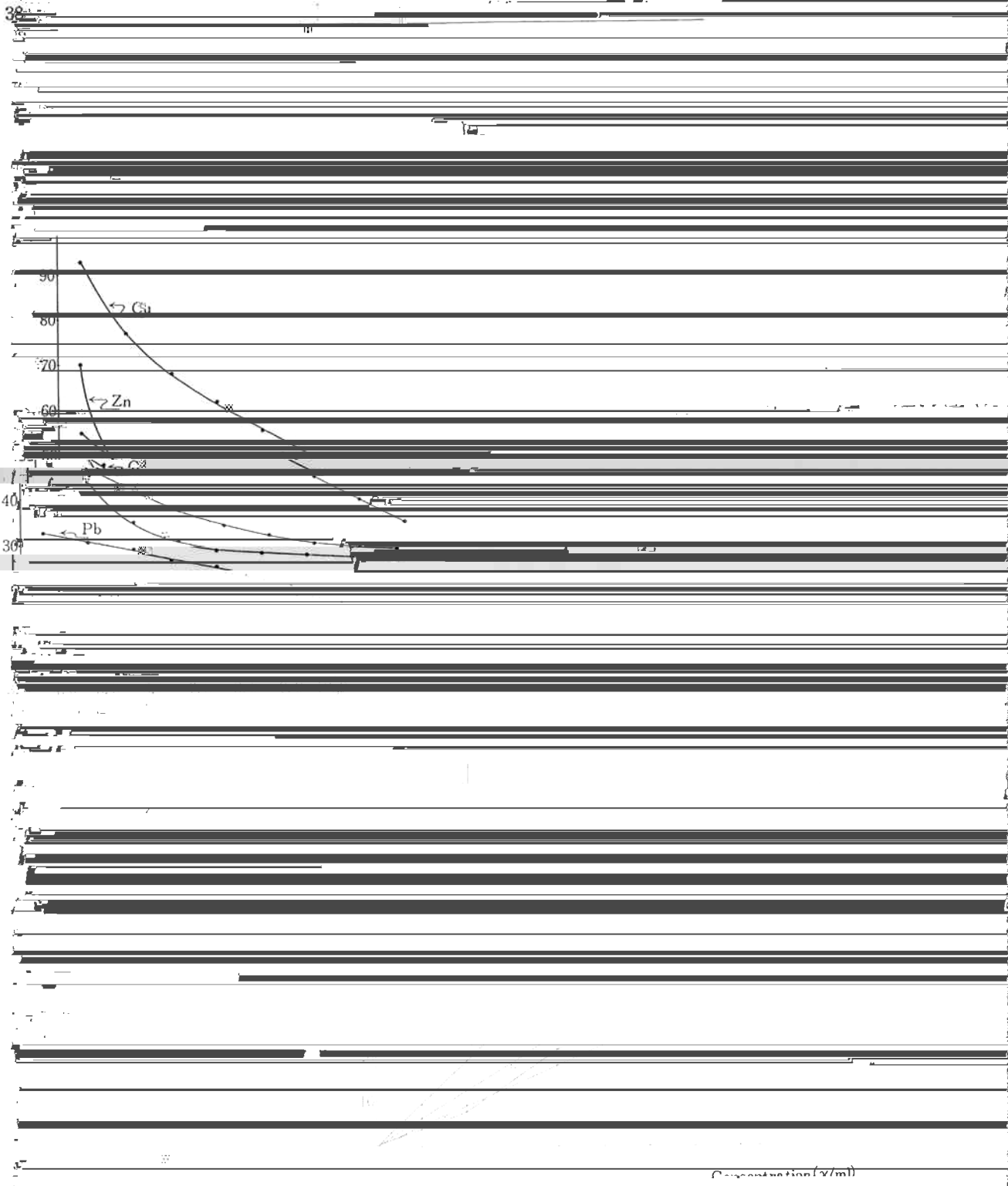
Yoshiji Tomura

[REDACTED]

	cu	zinc
nitration of		
phosphoric acid	.83	-1.25
	.78	-1.21
2 Mol		
4.5 "		
7.5 "		
10 "		
12 "		

74(57)

[The following text is extremely faint and largely illegible due to heavy noise and low contrast. It appears to be a list of items or a detailed report, possibly related to the data in the table above. Some faint words like "nitration" and "phosphoric acid" are visible.]

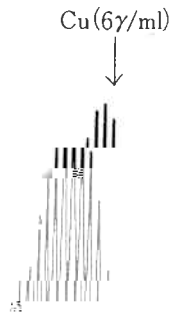


1 Calibration curve

Fig

Sensitivity : 1.0 μV/mm

	0	0		
	0.6	0.6		
Cu				
	0.6	0.6		
	2.4	2.3		
	6.0	6.2		
			0	
			2.4	0
			5.8	-0.2
			0.6	0
	2.4	10.5		
	6.0	12.6		
Cu				
			0.2	
			-0.1	
			-0.3	
			0.4	-0.2
			2.9	+0.5
	0	0.7		
	0.6	1.3	0.6	0
	2.4	3.0	2.3	-0.1
	6.0	6.5	5.8	-0.2
No. 2	2.4	2.3	2.3	-0.1
Sampl	6.0	6.2	6.2	+0.2
	0.6	5.1	0.2	+0.2



Pb(5γ/ml)

Cd(6γ/ml)

Zn(6γ/ml)

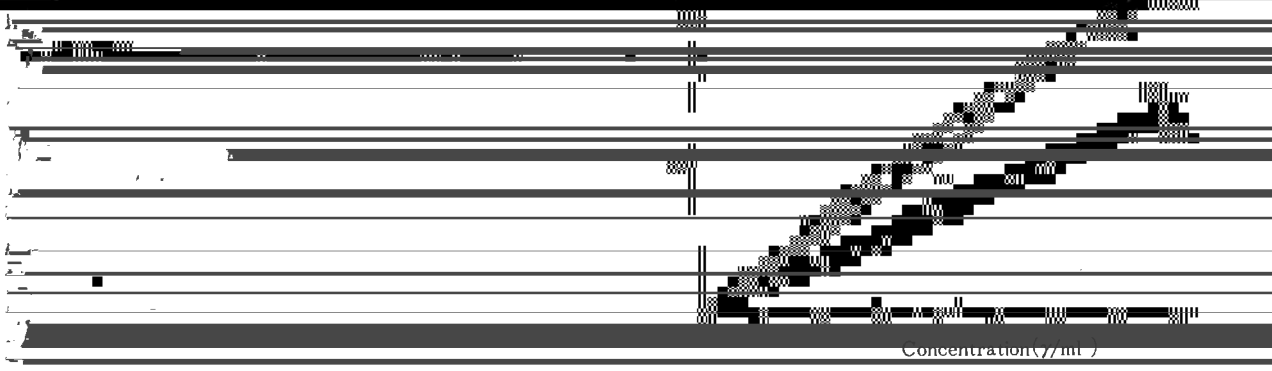
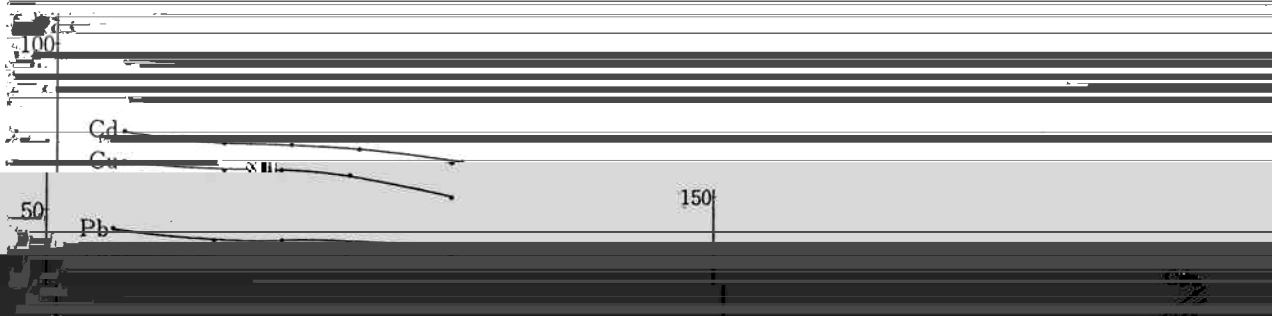
-0.2 -0.3 -0.4 -0.5 -0.8 -0.9 -1.0 -1.1

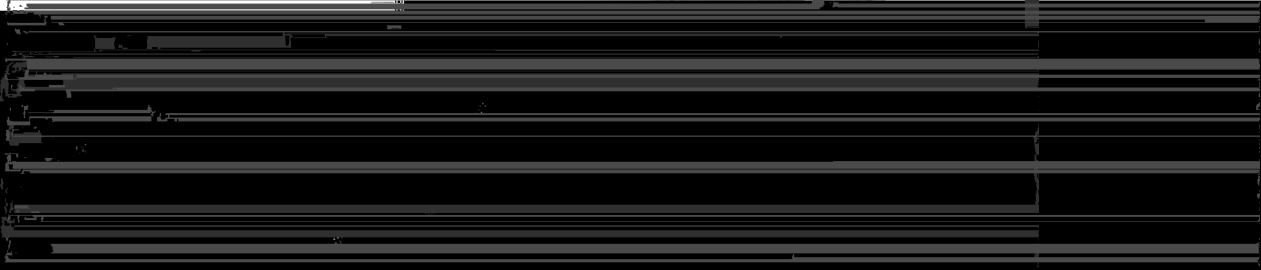
V (vs. Hg pool)

-0.6 -0.7

Cu
Cd
Zn

(a) 11-27 6000 1000 0.0000





	0	1.9	—	
	1.5	3.2	3.3	Difference
No. 1	4.5	6.7	4.8	
(Sample)	0	4.5	—	
	1.5	5.9	1.4	
	4.5	8.0	4.1	
	0	22.0	—	
Zn	1.5	24.2	2.2	+0.7
	4.5	26.6	4.5	+0.18
				+0.5
				+0.5



	4.5	9.1	5.3	
--	-----	-----	-----	--

	0	1.8	
No. 2	4.5	5.9	
	7.5	8.0	
Sample-	0	2.2	

